



Datasheet for ABIN2854522  
**anti-CHRNA3 antibody (Center)**



[Go to Product page](#)

2 Images

Overview

Quantity:	100 µL
Target:	CHRNA3
Binding Specificity:	Center
Reactivity:	Human
Host:	Rabbit
Clonality:	Polyclonal
Conjugate:	This CHRNA3 antibody is un-conjugated
Application:	Western Blotting (WB), Immunocytochemistry (ICC), Immunofluorescence (IF)

Product Details

Immunogen:	Recombinant protein encompassing a sequence within the center region of human Nicotinic Acetylcholine Receptor alpha 3. The exact sequence is proprietary.
Isotype:	IgG
Cross-Reactivity:	Mouse (Murine), Chicken, Rat (Rattus), Cow (Bovine)
Cross-Reactivity (Details):	Mouse (94 %), Chicken (87 %), Rat (94 %), Bovine (96 %)
Characteristics:	Rabbit Polyclonal antibody to AChR alpha 3 AChR alpha 3 antibody
Purification:	Purified by antigen-affinity chromatography.

## Target Details

Target:	CHRNA3
Alternative Name:	AChR alpha 3 ( <a href="#">CHRNA3 Products</a> )
Background:	<p>This locus encodes a member of the nicotinic acetylcholine receptor family of proteins. Members of this family of proteins form pentameric complexes comprised of both alpha and beta subunits. This locus encodes an alpha-type subunit, as it contains characteristic adjacent cysteine residues. The encoded protein is a ligand-gated ion channel that likely plays a role in neurotransmission. Polymorphisms in this gene have been associated with an increased risk of smoking initiation and an increased susceptibility to lung cancer. Alternatively spliced transcript variants have been described.</p> <p>Cellular Localization: Cell junction , synapse , postsynaptic cell membrane , Cell membrane</p>
Molecular Weight:	57 kDa
Gene ID:	1136
Pathways:	<a href="#">Synaptic Membrane</a>

## Application Details

Application Notes:	Suggested dilution Reference ICC/IF 1:100-1:1000* Western blot 1:500-1:3000* Not tested in other applications. *Optimal dilutions/concentrations should be determined by the researcher.Suggested dilutionReferenceICC/IF1:100-1:1000* Western blot1:500-1:3000*
Comment:	Positive Control: Molt-4
Restrictions:	For Research Use only

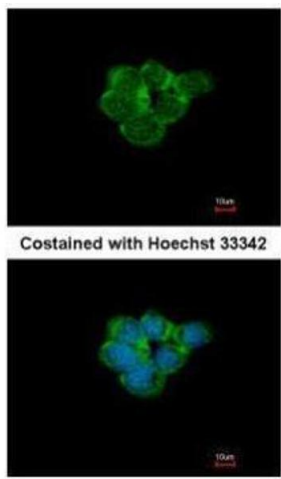
## Handling

Format:	Liquid
Concentration:	1 mg/mL
Buffer:	0.1M Tris, 0.1M Glycine, 10 % Glycerol ( pH 7). 0.01 % Thimerosal was added as a preservative.
Preservative:	Thimerosal (Merthiolate)
Precaution of Use:	This product contains Thimerosal (Merthiolate): a POISONOUS AND HAZARDOUS SUBSTANCE which should be handled by trained staff only.
Storage:	-20 °C

## Handling

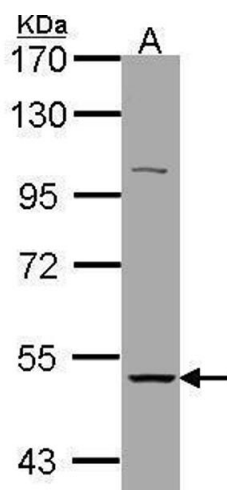
Storage Comment: Keep as concentrated solution. Aliquot and store at -20°C or below. Avoid multiple freeze-thaw cycles.

## Validation report #104426 for Immunohistochemistry (IHC)



### Immunofluorescence

**Image 1.** ICC/IF Image Immunofluorescence analysis of methanol-fixed A431, using Nicotinic Acetylcholine Receptor alpha 3, antibody at 1:500 dilution.



### Western Blotting

**Image 2.** WB Image Sample (30 ug of whole cell lysate) A: Molt-4, 7.5% SDS PAGE antibody diluted at 1:1000