

Datasheet for ABIN2854525

anti-ETV6 antibody



[Go to Product page](#)

1 Image

Overview

Quantity:	100 µL
Target:	ETV6
Reactivity:	Human
Host:	Rabbit
Clonality:	Polyclonal
Conjugate:	This ETV6 antibody is un-conjugated
Application:	Western Blotting (WB)

Product Details

Immunogen:	Recombinant protein encompassing a sequence within the center region of human TEL. The exact sequence is proprietary.
Isotype:	IgG
Cross-Reactivity:	Human
Characteristics:	Rabbit Polyclonal antibody to TEL (ets variant 6) TEL antibody [N1N3]
Purification:	Purified by antigen-affinity chromatography.

Target Details

Target:	ETV6
Alternative Name:	ETS variant 6 (ETV6 Products)

Target Details

Background: This gene encodes an ETS family transcription factor. The product of this gene contains two functional domains: a N-terminal pointed (PNT) domain that is involved in protein-protein interactions with itself and other proteins, and a C-terminal DNA-binding domain. Gene knockout studies in mice suggest that it is required for hematopoiesis and maintenance of the developing vascular network. This gene is known to be involved in a large number of chromosomal rearrangements associated with leukemia and congenital fibrosarcoma.

Cellular Localization: Nucleus

Molecular Weight: 53 kDa

Gene ID: 2120

UniProt: [P41212](#)

Application Details

Application Notes: WB: 1:500-1:3000. Optimal dilutions/concentrations should be determined by the researcher. Not tested in other applications.

Comment: Positive Control: Raji

Restrictions: For Research Use only

Handling

Format: Liquid

Concentration: 0.62 mg/mL

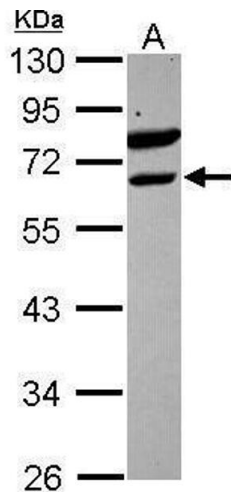
Buffer: 0.1M Tris-Glycine (pH 7), 20 % Glycerol, 0.01 % Thimerosal

Preservative: Thimerosal (Merthiolate)

Precaution of Use: This product contains Thimerosal (Merthiolate): a POISONOUS AND HAZARDOUS SUBSTANCE which should be handled by trained staff only.

Storage: 4 °C,-20 °C

Storage Comment: Store as concentrated solution. Centrifuge briefly prior to opening vial. For short-term storage (1-2 weeks), store at 4°C. For long-term storage, aliquot and store at -20°C or below. Avoid multiple freeze-thaw cycles.



Western Blotting

Image 1. WB Image Sample (30 ug of whole cell lysate) A:
Raji 10% SDS PAGE antibody diluted at 1:1000