

Datasheet for ABIN2854526

**anti-LGI1 antibody**[Go to Product page](#)**1** Image

## Overview

Quantity:	100 µL
Target:	LGI1
Reactivity:	Human
Host:	Rabbit
Clonality:	Polyclonal
Conjugate:	This LGI1 antibody is un-conjugated
Application:	Western Blotting (WB), Immunofluorescence (IF), Immunocytochemistry (ICC)

## Product Details

Immunogen:	Recombinant protein encompassing a sequence within the center region of human LGI1. The exact sequence is proprietary.
Isotype:	IgG
Cross-Reactivity:	Human, Rat
Characteristics:	Rabbit polyclonal antibody to LGI1 (leucine-rich, glioma inactivated 1) LGI1 antibody [N2C2], Internal
Purification:	Purified by antigen-affinity chromatography.

## Target Details

Target:	LGI1
Alternative Name:	leucine rich glioma inactivated 1 ( <a href="#">LGI1 Products</a> )

## Target Details

Background:	<p>This gene is rearranged as a result of translocations in glioblastoma cell lines. The protein contains a hydrophobic segment representing a putative transmembrane domain with the amino terminus located outside the cell. It also contains leucine-rich repeats with conserved cysteine-rich flanking sequences. This gene is predominantly expressed in neural tissues and its expression is reduced in low grade brain tumors and significantly reduced or absent in malignant gliomas. Mutations in this gene result in autosomal dominant lateral temporal epilepsy.</p> <p>Cellular Localization: Secreted</p>
-------------	--

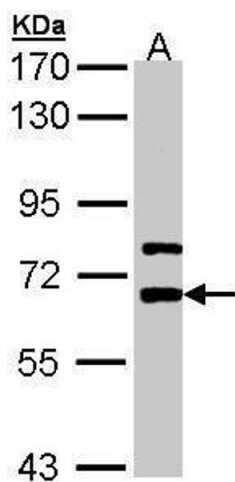
Molecular Weight:	64 kDa
Gene ID:	9211
UniProt:	<a href="#">O95970</a>

## Application Details

Application Notes:	WB: 1:500-1:10000. ICC/IF: 1:100-1:1000. Optimal dilutions/concentrations should be determined by the researcher. Not tested in other applications.
Comment:	Positive Control: A431 , U87-MG , SK-N-SH , SK-N-AS , rat brain
Restrictions:	For Research Use only

## Handling

Format:	Liquid
Concentration:	1 mg/mL
Buffer:	0.1M Tris-Glycine ( pH 7), 10 % Glycerol, 0.01 % Thimerosal
Preservative:	Thimerosal (Merthiolate)
Precaution of Use:	This product contains Thimerosal (Merthiolate): a POISONOUS AND HAZARDOUS SUBSTANCE which should be handled by trained staff only.
Storage:	4 °C,-20 °C
Storage Comment:	Store as concentrated solution. Centrifuge briefly prior to opening vial. For short-term storage (1-2 weeks), store at 4°C. For long-term storage, aliquot and store at -20°C or below. Avoid multiple freeze-thaw cycles.



Western Blotting

**Image 1.** WB Image Sample (30 ug of whole cell lysate) A:  
A431 , 7.5% SDS PAGE antibody diluted at 1:5000