

Datasheet for ABIN2854529

anti-GCS1 antibody**1** Image[Go to Product page](#)

Overview

Quantity:	100 µL
Target:	GCS1 (MOGS)
Reactivity:	Human
Host:	Rabbit
Clonality:	Polyclonal
Conjugate:	This GCS1 antibody is un-conjugated
Application:	Western Blotting (WB)

Product Details

Immunogen:	Recombinant protein encompassing a sequence within the center region of human Glucosidase I. The exact sequence is proprietary.
Isotype:	IgG
Cross-Reactivity:	Human
Characteristics:	Rabbit polyclonal antibody to Glucosidase I (mannosyl-oligosaccharide glucosidase) Glucosidase I antibody [N1N3]
Purification:	Purified by antigen-affinity chromatography.

Target Details

Target:	GCS1 (MOGS)
Alternative Name:	mannosyl-oligosaccharide glucosidase (MOGS Products)

Target Details

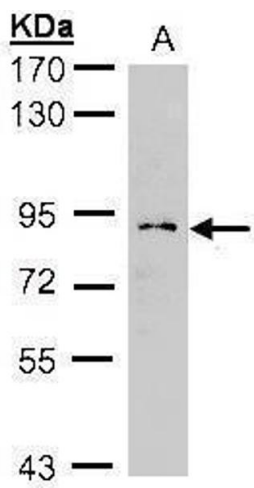
Background:	<p>This gene encodes the first enzyme in the N-linked oligosaccharide processing pathway. The enzyme cleaves the distal alpha-1,2-linked glucose residue from the Glc(3)-Man(9)-GlcNAc(2) oligosaccharide precursor. This protein is located in the lumen of the endoplasmic reticulum. Defects in this gene are a cause of type IIb congenital disorder of glycosylation (CDGIIb). Two transcript variants encoding different isoforms have been found for this gene.</p> <p>Cellular Localization: Endoplasmic reticulum membrane, Single-pass type II membrane protein</p>
Molecular Weight:	92 kDa
Gene ID:	7841
UniProt:	Q13724
Pathways:	SARS-CoV-2 Protein Interactome

Application Details

Application Notes:	<p>WB: 1:500-1:3000. Optimal dilutions/concentrations should be determined by the researcher.</p> <p>Not tested in other applications.</p>
Comment:	Positive Control: H1299
Restrictions:	For Research Use only

Handling

Format:	Liquid
Concentration:	1 mg/mL
Buffer:	0.1M Tris-Glycine (pH 7), 10 % Glycerol, 0.01 % Thimerosal
Preservative:	Thimerosal (Merthiolate)
Precaution of Use:	This product contains Thimerosal (Merthiolate): a POISONOUS AND HAZARDOUS SUBSTANCE which should be handled by trained staff only.
Storage:	4 °C,-20 °C
Storage Comment:	Store as concentrated solution. Centrifuge briefly prior to opening vial. For short-term storage (1-2 weeks), store at 4°C. For long-term storage, aliquot and store at -20°C or below. Avoid multiple freeze-thaw cycles.



Western Blotting

Image 1. WB Image Sample(30 ug whole cell lysate)
A:H1299 7.5% SDS PAGE antibody diluted at 1:1000