

Datasheet for ABIN2854534

anti-CAMK1G antibody[Go to Product page](#)**1** Image

Overview

Quantity:	100 µL
Target:	CAMK1G
Reactivity:	Human
Host:	Rabbit
Clonality:	Polyclonal
Conjugate:	This CAMK1G antibody is un-conjugated
Application:	Western Blotting (WB)

Product Details

Immunogen:	Recombinant protein encompassing a sequence within the center region of human CaMKI gamma. The exact sequence is proprietary.
Isotype:	IgG
Cross-Reactivity:	Mouse
Characteristics:	Rabbit Polyclonal antibody to CaMKI gamma (calcium/calmodulin-dependent protein kinase IG) CaMKI gamma antibody
Purification:	Purified by antigen-affinity chromatography.

Target Details

Target:	CAMK1G
Alternative Name:	calcium/calmodulin dependent protein kinase IG (CAMK1G Products)

Target Details

Background: This gene encodes a protein similar to calcium/calmodulin dependent protein kinase, however, its exact function is not known.

Cellular Localization: Cytoplasm (By similarity) , Golgi apparatus membrane, Peripheral membrane protein (By similarity) , Cell membrane, Peripheral membrane protein

Molecular Weight: 53 kDa

Gene ID: 57172

UniProt: [Q96NX5](#)

Application Details

Application Notes: WB: 1:1000-1:10000. Optimal dilutions/concentrations should be determined by the researcher.
Not tested in other applications.

Comment: Positive Control: Mouse brain

Restrictions: For Research Use only

Handling

Format: Liquid

Concentration: 1 mg/mL

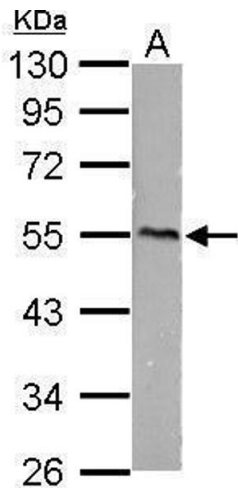
Buffer: 1XPBS (pH 7), 20 % Glycerol, 0.01 % Thimerosal

Preservative: Thimerosal (Merthiolate)

Precaution of Use: This product contains Thimerosal (Merthiolate): a POISONOUS AND HAZARDOUS SUBSTANCE which should be handled by trained staff only.

Storage: 4 °C,-20 °C

Storage Comment: Store as concentrated solution. Centrifuge briefly prior to opening vial. For short-term storage (1-2 weeks), store at 4°C. For long-term storage, aliquot and store at -20°C or below. Avoid multiple freeze-thaw cycles.



Western Blotting

Image 1. WB Image CaMKI gamma antibody detects CaMKI gamma protein by Western blot analysis. A. 50 µg mouse brain lysate/extract 10 % SDS-PAGE CaMKI gamma antibody , dilution: 1:5000