

Datasheet for ABIN2854536

**anti-Nucleolar Protein 1 (NOL1) (Internal Region) antibody**[Go to Product page](#)**1** Image

## Overview

Quantity:	100 µL
Target:	Nucleolar Protein 1 (NOL1)
Binding Specificity:	Internal Region
Reactivity:	Human
Host:	Rabbit
Clonality:	Polyclonal
Conjugate:	Un-conjugated
Application:	Western Blotting (WB)

## Product Details

Immunogen:	Recombinant protein encompassing a sequence within the center region of human NSUN1. The exact sequence is proprietary.
Isotype:	IgG
Cross-Reactivity:	Mouse (Murine), Pig (Porcine), Rat (Rattus), Cow (Bovine)
Cross-Reactivity (Details):	Mouse (96 %), Pig (97 %), Rat (96 %), Bovine (98 %)
Characteristics:	Rabbit Polyclonal antibody to NSUN1 (NOP2 nucleolar protein homolog (yeast)) NSUN1 antibody [N2C2], Internal
Purification:	Purified by antigen-affinity chromatography.

## Target Details

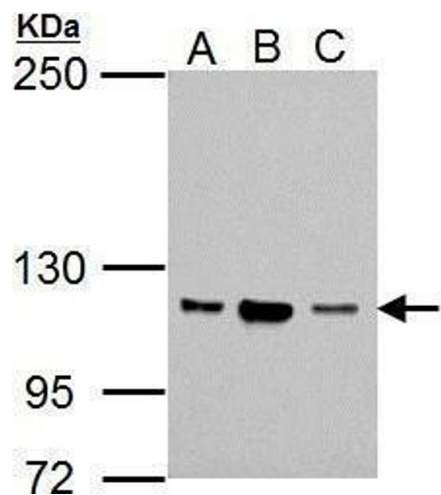
Target:	Nucleolar Protein 1 (NOL1)
Alternative Name:	NSUN1 ( <a href="#">NOL1 Products</a> )
Background:	May play a role in the regulation of the cell cycle and the increased nucleolar activity that is associated with the cell proliferation. May act as ribosomal RNA methyltransferase.  Cellular Localization: Nucleus , nucleolus
Molecular Weight:	89 kDa
Gene ID:	4839

## Application Details

Application Notes:	Suggested dilution Reference Western blot 1:500-1:3000* Not tested in other applications. *Optimal dilutions/concentrations should be determined by the researcher.Suggested dilutionReferenceWestern blot1:500-1:3000*
Comment:	Positive Control: Jurkat , Raji , K562
Restrictions:	For Research Use only

## Handling

Format:	Liquid
Concentration:	1 mg/mL
Buffer:	0.1M Tris, 0.1M Glycine, 20 % Glycerol ( pH 7). 0.01 % Thimerosal was added as a preservative.
Preservative:	Thimerosal (Merthiolate)
Precaution of Use:	This product contains Thimerosal (Merthiolate): a POISONOUS AND HAZARDOUS SUBSTANCE which should be handled by trained staff only.
Storage:	-20 °C
Storage Comment:	Keep as concentrated solution. Aliquot and store at -20°C or below. Avoid multiple freeze-thaw cycles.



**Western Blotting**

**Image 1.** WB Image Sample (30 ug of whole cell lysate) A: Jurkat B: Raji C: K562 5% SDS PAGE antibody diluted at 1:1000