

Datasheet for ABIN2854537

**anti-DCAF6 antibody**[Go to Product page](#)**1** Image

## Overview

Quantity:	100 µL
Target:	DCAF6
Reactivity:	Human
Host:	Rabbit
Clonality:	Polyclonal
Conjugate:	This DCAF6 antibody is un-conjugated
Application:	Western Blotting (WB), Immunohistochemistry (Paraffin-embedded Sections) (IHC (p)), Immunohistochemistry (Frozen Sections) (IHC (fro))

## Product Details

Immunogen:	Recombinant protein encompassing a sequence within the center region of human NRIP. The exact sequence is proprietary.
Isotype:	IgG
Cross-Reactivity:	Human, Mouse
Characteristics:	Rabbit polyclonal antibody to NRIP (IQ motif and WD repeats 1) NRIP antibody
Purification:	Purified by antigen-affinity chromatography.

## Target Details

Target:	DCAF6
Alternative Name:	DDB1 and CUL4 associated factor 6 ( <a href="#">DCAF6 Products</a> )

## Target Details

**Background:** Ligand-dependent coactivator of nuclear receptors. Enhance transcriptional activity of the nuclear receptors NR3C1 and AR. May function as a substrate receptor for CUL4-DDB1 E3 ubiquitin-protein ligase complex.

Cellular Localization: Nucleus

**Molecular Weight:** 96 kDa

**Gene ID:** 55827

**UniProt:** [Q58WW2](#)

## Application Details

**Application Notes:** WB: 1:500-1:3000. Optimal dilutions/concentrations should be determined by the researcher. Not tested in other applications.

**Comment:** Positive Control: HeLaS3 , HepG2  
Validation: Orthogonal

**Restrictions:** For Research Use only

## Handling

**Format:** Liquid

**Concentration:** 1 mg/mL

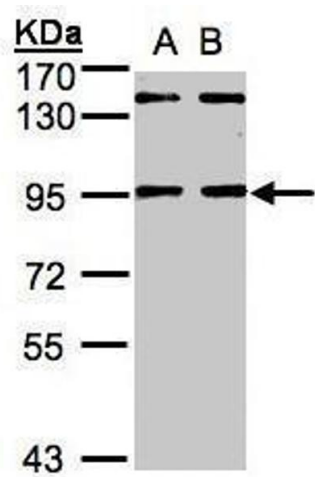
**Buffer:** 0.1M Tris-Glycine ( pH 7), 10 % Glycerol, 0.01 % Thimerosal

**Preservative:** Thimerosal (Merthiolate)

**Precaution of Use:** This product contains Thimerosal (Merthiolate): a POISONOUS AND HAZARDOUS SUBSTANCE which should be handled by trained staff only.

**Storage:** 4 °C,-20 °C

**Storage Comment:** Store as concentrated solution. Centrifuge briefly prior to opening vial. For short-term storage (1-2 weeks), store at 4°C. For long-term storage, aliquot and store at -20°C or below. Avoid multiple freeze-thaw cycles.



**Western Blotting**

**Image 1.** WB Image Sample(30 ug whole cell lysate)  
A:HeLa S3, B:Hep G2 , 7.5% SDS PAGE antibody diluted at 1:1000