

Datasheet for ABIN2854538

anti-RAD51 Homolog B antibody (Center)[Go to Product page](#)**1** Image

Overview

Quantity:	100 µL
Target:	RAD51 Homolog B (Rad51B)
Binding Specificity:	Center
Reactivity:	Human
Host:	Rabbit
Clonality:	Polyclonal
Conjugate:	This RAD51 Homolog B antibody is un-conjugated
Application:	Western Blotting (WB)

Product Details

Immunogen:	Recombinant protein encompassing a sequence within the center region of human RAD51B. The exact sequence is proprietary.
Isotype:	IgG
Cross-Reactivity:	Mouse (Murine), Cow (Bovine)
Cross-Reactivity (Details):	Mouse (86 %), Bovine (91 %)
Characteristics:	Rabbit polyclonal antibody to RAD51L1 (RAD51-like 1 (S. cerevisiae)) RAD51B antibody [N1C3]
Purification:	Purified by antigen-affinity chromatography.

Target Details

Target:	RAD51 Homolog B (Rad51B)
Alternative Name:	RAD51L1 (Rad51B Products)
Background:	<p>The protein encoded by this gene is a member of the RAD51 protein family. RAD51 family members are evolutionarily conserved proteins essential for DNA repair by homologous recombination. This protein has been shown to form a stable heterodimer with the family member RAD51C, which further interacts with the other family members, such as RAD51, XRCC2, and XRCC3. Overexpression of this gene was found to cause cell cycle G1 delay and cell apoptosis, which suggested a role of this protein in sensing DNA damage. At least three alternatively spliced transcript variants encoding distinct isoforms have been observed.</p> <p>Cellular Localization: Nucleus</p>
Molecular Weight:	42 kDa
Gene ID:	5890
Pathways:	DNA Damage Repair

Application Details

Application Notes:	<p>Suggested dilution Reference Western blot 1:500-1:3000* Not tested in other applications.</p> <p>*Optimal dilutions/concentrations should be determined by the researcher.Suggested dilutionReferenceWestern blot1:500-1:3000*</p>
Comment:	Positive Control: Raji
Restrictions:	For Research Use only

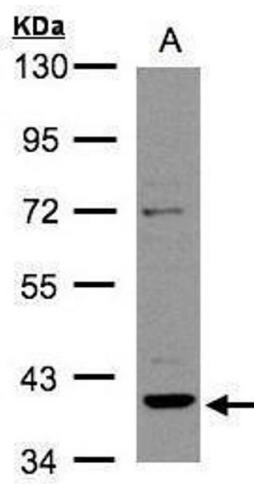
Handling

Format:	Liquid
Concentration:	1 mg/mL
Buffer:	0.1M Tris, 0.1M Glycine, 10 % Glycerol (pH 7). 0.01 % Thimerosal was added as a preservative.
Preservative:	Thimerosal (Merthiolate)
Precaution of Use:	This product contains Thimerosal (Merthiolate): a POISONOUS AND HAZARDOUS SUBSTANCE which should be handled by trained staff only.
Storage:	-20 °C

Handling

Storage Comment: Keep as concentrated solution. Aliquot and store at -20°C or below. Avoid multiple freeze-thaw cycles.

Validation report #104404 for Cleavage Under Targets and Release Using Nuclease (CUT&RUN)



Western Blotting

Image 1. WB Image Sample(30 ug whole cell lysate) A:Raji , 10% SDS PAGE antibody diluted at 1:2000