



Datasheet for ABIN2854540

anti-SRI antibody



[Go to Product page](#)

3 Images

Overview

Quantity:	100 µL
Target:	SRI
Reactivity:	Human
Host:	Rabbit
Clonality:	Polyclonal
Conjugate:	This SRI antibody is un-conjugated
Application:	Western Blotting (WB), Immunoprecipitation (IP)

Product Details

Immunogen:	Recombinant protein encompassing a sequence within the center region of human Sorcin. The exact sequence is proprietary.
Isotype:	IgG
Cross-Reactivity:	Human, Mouse
Characteristics:	Rabbit Polyclonal antibody to Sorcin (sorcin) Sorcin antibody [N1C3]
Purification:	Purified by antigen-affinity chromatography.
Grade:	KO Validated

Target Details

Target:	SRI
---------	-----

Target Details

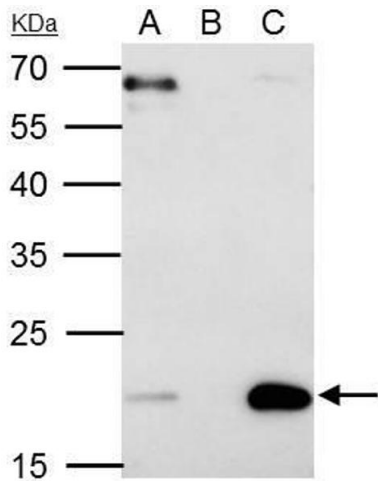
Alternative Name:	sorcin (SRI Products)
Background:	Calcium-binding protein that modulates excitation-contraction coupling in the heart. Contributes to calcium homeostasis in the heart sarcoplasmic reticulum. Modulates the activity of RYR2 calcium channels. Cellular Localization: Cytoplasm
Molecular Weight:	22 kDa
Gene ID:	6717
UniProt:	P30626
Pathways:	Transition Metal Ion Homeostasis , Maintenance of Protein Location , Negative Regulation of Transporter Activity

Application Details

Application Notes:	WB: 1:500-1:3000. IP: 1:100-1:500. Optimal dilutions/concentrations should be determined by the researcher. Not tested in other applications.
Comment:	Positive Control: Mouse heart , Molt-4 , HeLa Validation: KO/KD
Restrictions:	For Research Use only

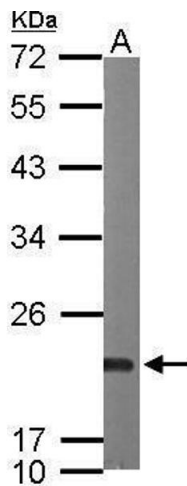
Handling

Format:	Liquid
Concentration:	0.65 mg/mL
Buffer:	0.1M Tris-Glycine (pH 7), 10 % Glycerol, 0.01 % Thimerosal
Preservative:	Thimerosal (Merthiolate)
Precaution of Use:	This product contains Thimerosal (Merthiolate): a POISONOUS AND HAZARDOUS SUBSTANCE which should be handled by trained staff only.
Storage:	4 °C,-20 °C
Storage Comment:	Store as concentrated solution. Centrifuge briefly prior to opening vial. For short-term storage (1-2 weeks), store at 4°C. For long-term storage, aliquot and store at -20°C or below. Avoid multiple freeze-thaw cycles.



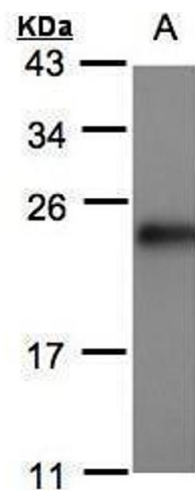
Immunoprecipitation

Image 1. IP Image Sorcin antibody [N1C3] immunoprecipitates Sorcin protein in IP experiments. IP samples: HeLa whole cell extract A. 40 µg HeLa whole cell extract B. Control with 4 µg of preimmune Rabbit IgG C. Immunoprecipitation of Sorcin protein by 4 µg Sorcin antibody [N1C3], 12 % SDS-PAGE The immunoprecipitated Sorcin protein was detected by Sorcin antibody [N1C3], diluted at 1:500. [EasyBlot anti-rabbit IgG was used as a secondary reagent]



Western Blotting

Image 2. WB Image Sample (50 ug of whole cell lysate) A: mouse heart 12% SDS PAGE antibody diluted at 1:1000



Western Blotting

Image 3. WB Image Sample(30 µg of whole cell lysate) A:MOLT4, 15% SDS PAGE antibody diluted at 1:500