



[Go to Product page](#)

Datasheet for ABIN2854541
anti-PGPEP1 antibody

1 Image

Overview

| | |
|--------------|---------------------------------------|
| Quantity: | 100 µL |
| Target: | PGPEP1 |
| Reactivity: | Human |
| Host: | Rabbit |
| Clonality: | Polyclonal |
| Conjugate: | This PGPEP1 antibody is un-conjugated |
| Application: | Western Blotting (WB) |

Product Details

| | |
|-------------------|---|
| Immunogen: | Recombinant protein encompassing a sequence within the center region of human PGPEP1. The exact sequence is proprietary. |
| Isotype: | IgG |
| Cross-Reactivity: | Mouse |
| Characteristics: | Rabbit Polyclonal antibody to PGPEP1 (pyroglutamyl-peptidase I) PGPEP1 antibody [N1C3] |
| Purification: | Purified by antigen-affinity chromatography. |

Target Details

| | |
|-------------------|--|
| Target: | PGPEP1 |
| Alternative Name: | pyroglutamyl-peptidase I (PGPEP1 Products) |

Target Details

Background: Pyroglutamyl peptidase I (EC 3.4.19.3) catalyzes the hydrolysis of N-terminal pyroglutamyl residues from oligopeptides and proteins.[supplied by OMIM]

Cellular Localization: Cytoplasm

Molecular Weight: 23 kDa

Gene ID: 54858

UniProt: [Q9NXJ5](#)

Application Details

Application Notes: WB: 1:500-1:3000. Optimal dilutions/concentrations should be determined by the researcher.
Not tested in other applications.

Comment: Positive Control: Mouse kidney

Restrictions: For Research Use only

Handling

Format: Liquid

Concentration: 1 mg/mL

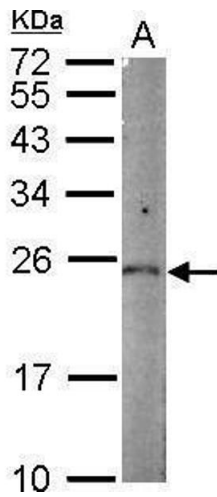
Buffer: 1XPBS (pH 7), 1 % BSA, 20 % Glycerol, 0.01 % Thimerosal

Preservative: Thimerosal (Merthiolate)

Precaution of Use: This product contains Thimerosal (Merthiolate): a POISONOUS AND HAZARDOUS SUBSTANCE which should be handled by trained staff only.

Storage: 4 °C,-20 °C

Storage Comment: Store as concentrated solution. Centrifuge briefly prior to opening vial. For short-term storage (1-2 weeks), store at 4°C. For long-term storage, aliquot and store at -20°C or below. Avoid multiple freeze-thaw cycles.



Western Blotting

Image 1. WB Image Sample (50 ug of whole cell lysate) A:
mouse kidney 12% SDS PAGE antibody diluted at 1:1000