



[Go to Product page](#)

Datasheet for ABIN2854543
anti-KEL antibody (N-Term)

1 Image

Overview

Quantity:	100 µL
Target:	KEL
Binding Specificity:	N-Term
Reactivity:	Human
Host:	Rabbit
Clonality:	Polyclonal
Conjugate:	This KEL antibody is un-conjugated
Application:	Western Blotting (WB)

Product Details

Immunogen:	Recombinant protein encompassing a sequence within the N-terminus region of human KEL. The exact sequence is proprietary.
Isotype:	IgG
Characteristics:	Rabbit polyclonal antibody to KEL (KELI blood group, metallo-endopeptidase) KEL antibody [N1N3]
Purification:	Purified by antigen-affinity chromatography.

Target Details

Target:	KEL
Alternative Name:	KEL (KEL Products)

Target Details

Background: This gene encodes a type II transmembrane glycoprotein that is the highly polymorphic Kell blood group antigen. The Kell glycoprotein links via a single disulfide bond to the XK membrane protein that carries the Kx antigen. The encoded protein contains sequence and structural similarity to members of the neprilysin (M13) family of zinc endopeptidases.

Cellular Localization: Cell membrane, Single-pass type II membrane protein

Molecular Weight: 83 kDa

Gene ID: 3792

Application Details

Application Notes: Suggested dilution Reference Western blot 1:1000-1:10000* Not tested in other applications.
Optimal dilutions/concentrations should be determined by the researcher.Suggested dilutionReferenceWestern blot1:1000-1:10000

Comment: Positive Control: K562 , THP-1

Restrictions: For Research Use only

Handling

Format: Liquid

Concentration: 0.4 mg/mL

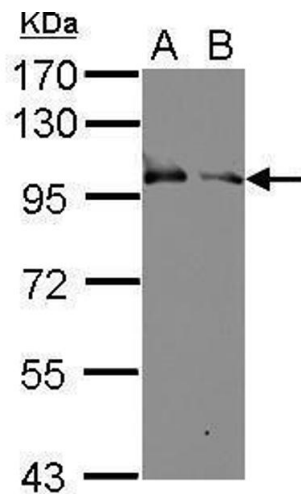
Buffer: 0.1M Tris, 0.1M Glycine, 10 % Glycerol (pH 7). 0.01 % Thimerosal was added as a preservative.

Preservative: Thimerosal (Merthiolate)

Precaution of Use: This product contains Thimerosal (Merthiolate): a POISONOUS AND HAZARDOUS SUBSTANCE which should be handled by trained staff only.

Storage: -20 °C

Storage Comment: Keep as concentrated solution. Aliquot and store at -20°C or below. Avoid multiple freeze-thaw cycles.



Western Blotting

Image 1. WB Image Sample (30 ug of whole cell lysate) A: K562 B: THP-1 7.5% SDS PAGE antibody diluted at 1:10000