

Datasheet for ABIN2854546
anti-Dermatopontin antibody[Go to Product page](#)

1 Image

Overview

Quantity:	100 µL
Target:	Dermatopontin (DPT)
Reactivity:	Human
Host:	Rabbit
Clonality:	Polyclonal
Conjugate:	This Dermatopontin antibody is un-conjugated
Application:	Western Blotting (WB)

Product Details

Immunogen:	Recombinant protein encompassing a sequence within the center region of human Dermatopontin. The exact sequence is proprietary.
Isotype:	IgG
Cross-Reactivity:	Human
Characteristics:	Rabbit polyclonal antibody to Dermatopontin (dermatopontin) Dermatopontin antibody
Purification:	Purified by antigen-affinity chromatography.

Target Details

Target:	Dermatopontin (DPT)
Alternative Name:	dermatopontin (DPT Products)

Target Details

Background: Dermatopontin is an extracellular matrix protein with possible functions in cell-matrix interactions and matrix assembly. The protein is found in various tissues and many of its tyrosine residues are sulphated. Dermatopontin is postulated to modify the behavior of TGF-beta through interaction with decorin.

Cellular Localization: Secreted , extracellular space , extracellular matrix

Molecular Weight: 24 kDa

Gene ID: 1805

UniProt: [Q07507](#)

Application Details

Application Notes: WB: 1:500-1:3000. Optimal dilutions/concentrations should be determined by the researcher.
Not tested in other applications.

Comment: Positive Control: DPT transfected 293T

Restrictions: For Research Use only

Handling

Format: Liquid

Concentration: 0.53 mg/mL

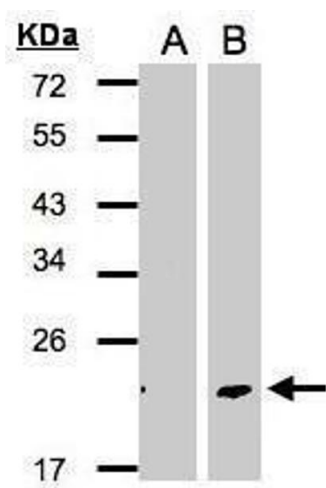
Buffer: 0.1M Tris-Glycine (pH 7), 10 % Glycerol, 0.01 % Thimerosal

Preservative: Thimerosal (Merthiolate)

Precaution of Use: This product contains Thimerosal (Merthiolate): a POISONOUS AND HAZARDOUS SUBSTANCE which should be handled by trained staff only.

Storage: 4 °C,-20 °C

Storage Comment: Store as concentrated solution. Centrifuge briefly prior to opening vial. For short-term storage (1-2 weeks), store at 4°C. For long-term storage, aliquot and store at -20°C or below. Avoid multiple freeze-thaw cycles.



Western Blotting

Image 1. WB Image Western Blot analysis of DPT expression in transfected 293T cell line by DPT polyclonal antibody. A: Non-transfected lysate. B: DPT transfected lysate. 12% SDS PAGE antibody diluted at 1:500