

Datasheet for ABIN2854547
anti-Arylsulfatase A antibody[Go to Product page](#)

1 Image

Overview

Quantity:	100 µL
Target:	Arylsulfatase A (ARSA)
Reactivity:	Human
Host:	Rabbit
Clonality:	Polyclonal
Conjugate:	This Arylsulfatase A antibody is un-conjugated
Application:	Western Blotting (WB)

Product Details

Immunogen:	Recombinant protein encompassing a sequence within the center region of human Arylsulfatase A. The exact sequence is proprietary.
Isotype:	IgG
Cross-Reactivity:	Human
Characteristics:	Rabbit Polyclonal antibody to Arylsulfatase A Arylsulfatase A antibody [N2C2], Internal
Purification:	Purified by antigen-affinity chromatography.

Target Details

Target:	Arylsulfatase A (ARSA)
Alternative Name:	arylsulfatase A (ARSA Products)

Target Details

Background: The protein encoded by this gene hydrolyzes cerebroside sulfate to cerebroside and sulfate. Defects in this gene lead to metachromatic leucodystrophy (MLD), a progressive demyelination disease which results in a variety of neurological symptoms and ultimately death. Multiple alternatively spliced transcript variants, one of which encodes a distinct protein, have been described for this gene.

Cellular Localization: Lysosome

Molecular Weight: 54 kDa

Gene ID: 410

UniProt: [P15289](#)

Application Details

Application Notes: WB: 1:500-1:3000. Optimal dilutions/concentrations should be determined by the researcher.
Not tested in other applications.

Comment: Positive Control: H1299 , HeLa

Restrictions: For Research Use only

Handling

Format: Liquid

Concentration: 0.44 mg/mL

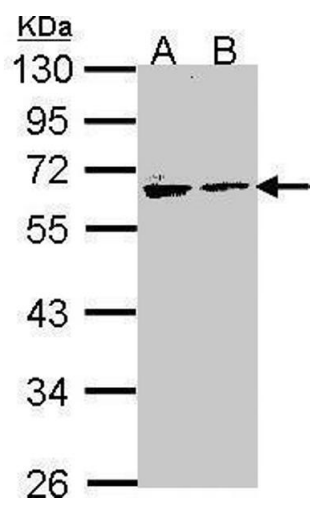
Buffer: 0.1M Tris-Glycine (pH 7), 10 % Glycerol, 0.01 % Thimerosal

Preservative: Thimerosal (Merthiolate)

Precaution of Use: This product contains Thimerosal (Merthiolate): a POISONOUS AND HAZARDOUS SUBSTANCE which should be handled by trained staff only.

Storage: 4 °C, -20 °C

Storage Comment: Store as concentrated solution. Centrifuge briefly prior to opening vial. For short-term storage (1-2 weeks), store at 4°C. For long-term storage, aliquot and store at -20°C or below. Avoid multiple freeze-thaw cycles.



Western Blotting

Image 1. WB Image Sample (30 ug of whole cell lysate) A: H1299 B: Hela 10% SDS PAGE antibody diluted at 1:1000