



Datasheet for ABIN2854550  
**anti-BMP6 antibody**



[Go to Product page](#)

1 Image

Overview

Quantity:	100 µL
Target:	BMP6
Reactivity:	Human
Host:	Rabbit
Clonality:	Polyclonal
Conjugate:	This BMP6 antibody is un-conjugated
Application:	Western Blotting (WB)

Product Details

Immunogen:	Recombinant protein encompassing a sequence within the center region of human BMP6. The exact sequence is proprietary.
Isotype:	IgG
Cross-Reactivity:	Human
Characteristics:	Rabbit polyclonal antibody to BMP6 (bone morphogenetic protein 6) BMP6 antibody
Purification:	Purified by antigen-affinity chromatography.

Target Details

Target:	BMP6
Alternative Name:	bone morphogenetic protein 6 ( <a href="#">BMP6 Products</a> )

## Target Details

---

**Background:** The bone morphogenetic proteins (BMPs) are a family of secreted signaling molecules that can induce ectopic bone growth. Many BMPs are part of the transforming growth factor-beta (TGFB) superfamily. BMPs were originally identified by an ability of demineralized bone extract to induce endochondral osteogenesis in vivo in an extraskelatal site. Based on its expression early in embryogenesis, the BMP encoded by this gene has a proposed role in early development. In addition, the fact that this BMP is closely related to BMP5 and BMP7 has lead to speculation of possible bone inductive activity.

Cellular Localization: Secreted

---

**Molecular Weight:** 57 kDa

---

**Gene ID:** 654

---

**UniProt:** [P22004](#)

---

**Pathways:** [Regulation of Hormone Metabolic Process](#), [Regulation of Hormone Biosynthetic Process](#)

## Application Details

---

**Application Notes:** WB: 1:500-1:3000. Optimal dilutions/concentrations should be determined by the researcher. Not tested in other applications.

---

**Comment:** Positive Control: A431

---

**Restrictions:** For Research Use only

## Handling

---

**Format:** Liquid

---

**Concentration:** 1 mg/mL

---

**Buffer:** 1XPBS ( pH 7), 1 % BSA, 20 % Glycerol, 0.01 % Thimerosal

---

**Preservative:** Thimerosal (Merthiolate)

---

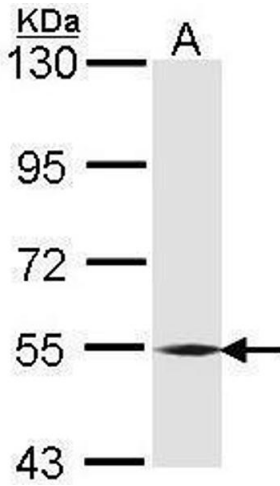
**Precaution of Use:** This product contains Thimerosal (Merthiolate): a POISONOUS AND HAZARDOUS SUBSTANCE which should be handled by trained staff only.

---

**Storage:** 4 °C, -20 °C

---

**Storage Comment:** Store as concentrated solution. Centrifuge briefly prior to opening vial. For short-term storage (1-2 weeks), store at 4°C. For long-term storage, aliquot and store at -20°C or below. Avoid multiple freeze-thaw cycles.



### Western Blotting

**Image 1.** WB Image Sample (30 ug of whole cell lysate) A:  
A431 , 7.5% SDS PAGE antibody diluted at 1:1000