

Datasheet for ABIN2854552

anti-IL1RL1 antibody[Go to Product page](#)**2** Images

Overview

Quantity:	100 µL
Target:	IL1RL1
Reactivity:	Human
Host:	Rabbit
Clonality:	Polyclonal
Conjugate:	This IL1RL1 antibody is un-conjugated
Application:	Western Blotting (WB)

Product Details

Immunogen:	Recombinant protein encompassing a sequence within the center region of human ST2. The exact sequence is proprietary.
Isotype:	IgG
Cross-Reactivity:	Mouse, Rat
Characteristics:	Rabbit polyclonal antibody to IL1RL1 (interleukin 1 receptor-like 1) ST2 antibody [N1C1]
Purification:	Purified by antigen-affinity chromatography.

Target Details

Target:	IL1RL1
Alternative Name:	interleukin 1 receptor like 1 (IL1RL1 Products)

Target Details

Background: The protein encoded by this gene is a member of the interleukin 1 receptor family. Studies of the similar gene in mouse suggested that this receptor can be induced by proinflammatory stimuli, and may be involved in the function of helper T cells. This gene, interleukin 1 receptor, type I (IL1R1), interleukin 1 receptor, type II (IL1R2) and interleukin 1 receptor-like 2 (IL1RL2) form a cytokine receptor gene cluster in a region mapped to chromosome 2q12. Alternative splicing of this gene results in multiple transcript variants.

Cellular Localization: Isoform C: Cell membrane , Isoform B: Secreted , Cell membrane, Single-pass type I membrane protein

Molecular Weight: 63 kDa

Gene ID: 9173

UniProt: [Q01638](#)

Application Details

Application Notes: WB: 1:500-1:3000. Optimal dilutions/concentrations should be determined by the researcher.
Not tested in other applications.

Comment: Positive Control: Raw264.7 , Rat colon

Restrictions: For Research Use only

Handling

Format: Liquid

Concentration: 1 mg/mL

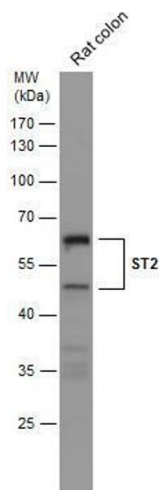
Buffer: 0.1M Tris-Glycine (pH 7), 10 % Glycerol, 0.01 % Thimerosal

Preservative: Thimerosal (Merthiolate)

Precaution of Use: This product contains Thimerosal (Merthiolate): a POISONOUS AND HAZARDOUS SUBSTANCE which should be handled by trained staff only.

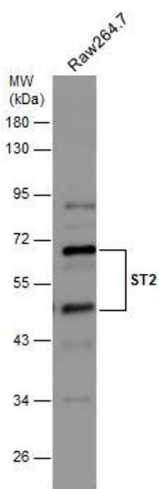
Storage: 4 °C,-20 °C

Storage Comment: Store as concentrated solution. Centrifuge briefly prior to opening vial. For short-term storage (1-2 weeks), store at 4°C. For long-term storage, aliquot and store at -20°C or below. Avoid multiple freeze-thaw cycles.



Western Blotting

Image 1. WB Image Rat tissue extract (50 µg) was separated by 10% SDS-PAGE, and the membrane was blotted with ST2 antibody [N1C1] , diluted at 1:500.



Western Blotting

Image 2. WB Image Whole cell extract (30 µg) was separated by 10% SDS-PAGE, and the membrane was blotted with ST2 antibody [N1C1] , diluted at 1:500.