

Datasheet for ABIN2854553

anti-DP1 antibody[Go to Product page](#)**1** Image

Overview

Quantity:	100 µL
Target:	DP1 (TFDP1)
Reactivity:	Human
Host:	Rabbit
Clonality:	Polyclonal
Conjugate:	This DP1 antibody is un-conjugated
Application:	Western Blotting (WB)

Product Details

Immunogen:	Recombinant protein encompassing a sequence within the center region of human DP1. The exact sequence is proprietary.
Isotype:	IgG
Cross-Reactivity:	Human
Characteristics:	Rabbit polyclonal antibody to DP-1 (transcription factor Dp-1) DP1 antibody [N1C1]
Purification:	Purified by antigen-affinity chromatography.

Target Details

Target:	DP1 (TFDP1)
Alternative Name:	transcription factor Dp-1 (TFDP1 Products)

Target Details

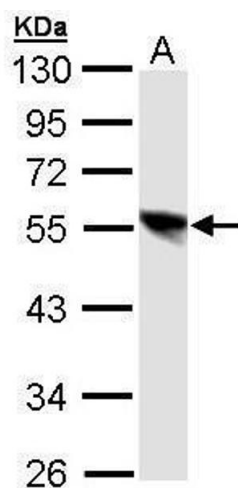
Background:	<p>This gene encodes a member of a family of transcription factors that heterodimerize with E2F proteins to enhance their DNA-binding activity and promote transcription from E2F target genes. The encoded protein functions as part of this complex to control the transcriptional activity of numerous genes involved in cell cycle progression from G1 to S phase. Alternative splicing results in multiple transcript variants. Pseudogenes of this gene are found on chromosomes 1, 15, and X.</p> <p>Cellular Localization: Nucleus</p>
Molecular Weight:	45 kDa
Gene ID:	7027
UniProt:	Q14186
Pathways:	Cell Division Cycle, Mitotic G1-G1/S Phases

Application Details

Application Notes:	<p>WB: 1:500-1:3000. Optimal dilutions/concentrations should be determined by the researcher.</p> <p>Not tested in other applications.</p>
Comment:	Positive Control: 293T
Restrictions:	For Research Use only

Handling

Format:	Liquid
Concentration:	0.68 mg/mL
Buffer:	0.1M Tris-Glycine (pH 7), 10 % Glycerol, 0.01 % Thimerosal
Preservative:	Thimerosal (Merthiolate)
Precaution of Use:	This product contains Thimerosal (Merthiolate): a POISONOUS AND HAZARDOUS SUBSTANCE which should be handled by trained staff only.
Storage:	4 °C,-20 °C
Storage Comment:	Store as concentrated solution. Centrifuge briefly prior to opening vial. For short-term storage (1-2 weeks), store at 4°C. For long-term storage, aliquot and store at -20°C or below. Avoid multiple freeze-thaw cycles.



Western Blotting

Image 1. WB Image Sample (30 ug of whole cell lysate) A:
293T 10% SDS PAGE antibody diluted at 1:1000