

Datasheet for ABIN2854555

**anti-HABP2 antibody**[Go to Product page](#)**1** Image

## Overview

Quantity:	100 µL
Target:	HABP2
Reactivity:	Human
Host:	Rabbit
Clonality:	Polyclonal
Conjugate:	This HABP2 antibody is un-conjugated
Application:	Western Blotting (WB)

## Product Details

Immunogen:	Recombinant protein encompassing a sequence within the center region of human HABP2. The exact sequence is proprietary.
Isotype:	IgG
Cross-Reactivity:	Human
Characteristics:	Rabbit Polyclonal antibody to HABP2 (hyaluronan binding protein 2) HABP2 antibody
Purification:	Purified by antigen-affinity chromatography.

## Target Details

Target:	HABP2
Alternative Name:	hyaluronan binding protein 2 ( <a href="#">HABP2 Products</a> )

## Target Details

**Background:** The protein encoded by this gene is an extracellular serine protease that binds hyaluronic acid and is involved in cell adhesion. The encoded protein is synthesized as a single chain, but then undergoes an autoproteolytic event to form the functional heterodimer. Further autoproteolysis leads to smaller, inactive peptides. This protease is known to cleave urinary plasminogen activator, coagulation factor VII, and the alpha and beta chains of fibrinogen, but not prothrombin, plasminogen, or the gamma chain of fibrinogen.

Cellular Localization: Secreted

**Molecular Weight:** 63 kDa

**Gene ID:** 3026

**UniProt:** [Q14520](#)

## Application Details

**Application Notes:** WB: 1:500-1:3000. Optimal dilutions/concentrations should be determined by the researcher. Not tested in other applications.

**Comment:** Positive Control: A549

**Restrictions:** For Research Use only

## Handling

**Format:** Liquid

**Concentration:** 1 mg/mL

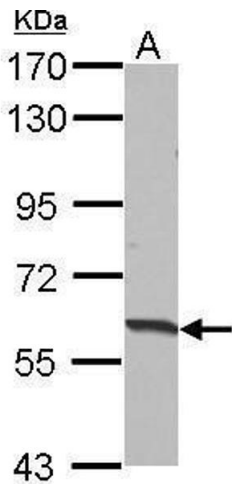
**Buffer:** 1XPBS ( pH 7), 1 % BSA, 20 % Glycerol, 0.01 % Thimerosal

**Preservative:** Thimerosal (Merthiolate)

**Precaution of Use:** This product contains Thimerosal (Merthiolate): a POISONOUS AND HAZARDOUS SUBSTANCE which should be handled by trained staff only.

**Storage:** 4 °C,-20 °C

**Storage Comment:** Store as concentrated solution. Centrifuge briefly prior to opening vial. For short-term storage (1-2 weeks), store at 4°C. For long-term storage, aliquot and store at -20°C or below. Avoid multiple freeze-thaw cycles.



Western Blotting

**Image 1.** WB Image Sample (30 ug of whole cell lysate) A:  
A549 7.5% SDS PAGE antibody diluted at 1:1000