



[Go to Product page](#)

Datasheet for ABIN2854558
anti-SCARF1 antibody (N-Term)

1 Image

Overview

Quantity:	100 µL
Target:	SCARF1
Binding Specificity:	N-Term
Reactivity:	Human
Host:	Rabbit
Clonality:	Polyclonal
Conjugate:	This SCARF1 antibody is un-conjugated
Application:	Western Blotting (WB)

Product Details

Immunogen:	Carrier-protein conjugated synthetic peptide encompassing a sequence within the N-terminus region of human SCARF1. The exact sequence is proprietary.
Isotype:	IgG
Cross-Reactivity:	Human
Characteristics:	Rabbit Polyclonal antibody to SCARF1 (scavenger receptor class F, member 1) SCARF1 antibody
Purification:	Purified by antigen-affinity chromatography.

Target Details

Target:	SCARF1
---------	--------

Target Details

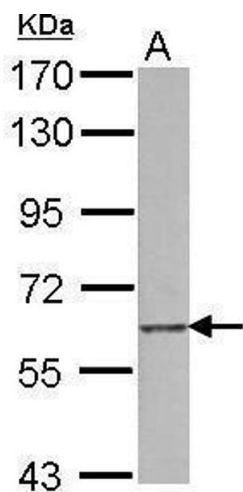
Alternative Name:	scavenger receptor class F member 1 (SCARF1 Products)
Background:	<p>The protein encoded by this gene is a scavenger receptor that is expressed in endothelial cells and mediates the binding and degradation of acetylated low density lipoprotein (Ac-LDL). Transcription factors ZNF444/EZF-2 and SP1 are found to be responsible for the regulation of this gene. Five alternatively spliced transcript variants encoding distinct isoforms have been described.</p> <p>Cellular Localization: Membrane, Single-pass type I membrane protein</p>
Molecular Weight:	87 kDa
Gene ID:	8578
UniProt:	Q14162

Application Details

Application Notes:	WB: 1:500-1:3000. Optimal dilutions/concentrations should be determined by the researcher. Not tested in other applications.
Comment:	Positive Control: HUVEC
Restrictions:	For Research Use only

Handling

Format:	Liquid
Concentration:	1 mg/mL
Buffer:	1XPBS (pH 7), 10 % Glycerol, 0.01 % Thimerosal
Preservative:	Thimerosal (Merthiolate)
Precaution of Use:	This product contains Thimerosal (Merthiolate): a POISONOUS AND HAZARDOUS SUBSTANCE which should be handled by trained staff only.
Storage:	4 °C,-20 °C
Storage Comment:	Store as concentrated solution. Centrifuge briefly prior to opening vial. For short-term storage (1-2 weeks), store at 4°C. For long-term storage, aliquot and store at -20°C or below. Avoid multiple freeze-thaw cycles.



Western Blotting

Image 1. WB Image Sample (15 ug of whole cell lysate) A:
HUVEC 7.5% SDS PAGE antibody diluted at 1:2000