

Datasheet for ABIN2854560
anti-CDYL antibody (C-Term)[Go to Product page](#)

1 Image

Overview

Quantity:	100 µL
Target:	CDYL
Binding Specificity:	C-Term
Reactivity:	Human
Host:	Rabbit
Clonality:	Polyclonal
Conjugate:	This CDYL antibody is un-conjugated
Application:	Western Blotting (WB)

Product Details

Immunogen:	Carrier-protein conjugated synthetic peptide encompassing a sequence within the C-terminus region of human CDYL. The exact sequence is proprietary.
Isotype:	IgG
Characteristics:	Rabbit polyclonal antibody to CDYL (chromodomain protein, Y-like) CDYL antibody
Purification:	Purified by antigen-affinity chromatography.

Target Details

Target:	CDYL
Alternative Name:	CDYL (CDYL Products)

Target Details

Background: Chromodomain Y is a primate-specific Y-chromosomal gene family expressed exclusively in the testis and implicated in infertility. Although the Y-linked genes are testis-specific, this autosomal gene is ubiquitously expressed. The Y-linked genes arose by retrotransposition of an mRNA from this gene, followed by amplification of the retroposed gene. Proteins encoded by this gene superfamily possess a chromodomain, a motif implicated in chromatin binding and gene suppression, and a catalytic domain believed to be involved in histone acetylation. Multiple proteins are encoded by transcript variants of this gene.

Cellular Localization: Nucleus

Molecular Weight: 66 kDa

Gene ID: 9425

Application Details

Application Notes: Suggested dilution Reference Western blot 1:500-1:3000* Not tested in other applications.
Optimal dilutions/concentrations should be determined by the researcher.Suggested dilutionReferenceWestern blot1:500-1:3000

Comment: Positive Control: A431 , H1299 , HeLaS3

Restrictions: For Research Use only

Handling

Format: Liquid

Concentration: 1 mg/mL

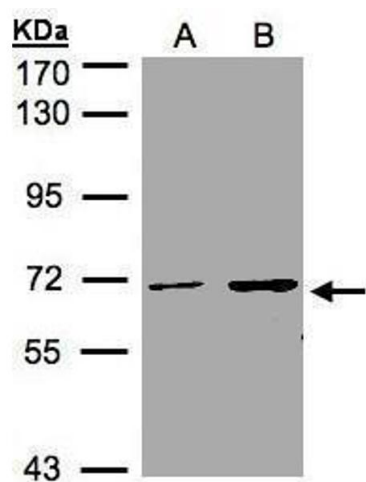
Buffer: 1XPBS, 10 % Glycerol (pH 7). 0.01 % Thimerosal was added as a preservative.

Preservative: Thimerosal (Merthiolate)

Precaution of Use: This product contains Thimerosal (Merthiolate): a POISONOUS AND HAZARDOUS SUBSTANCE which should be handled by trained staff only.

Storage: -20 °C

Storage Comment: Keep as concentrated solution. Aliquot and store at -20°C or below. Avoid multiple freeze-thaw cycles.



Western Blotting

Image 1. WB Image Sample(30 µg of whole cell lysate)
A:A431, B:H1299 7.5% SDS PAGE antibody diluted at 1:1000