



[Go to Product page](#)

Datasheet for ABIN2854566
anti-GCOM1 antibody (C-Term)

1 Image

Overview

Quantity:	100 µL
Target:	GCOM1
Binding Specificity:	C-Term
Reactivity:	Human
Host:	Rabbit
Clonality:	Polyclonal
Conjugate:	This GCOM1 antibody is un-conjugated
Application:	Western Blotting (WB)

Product Details

Immunogen:	Recombinant protein encompassing a sequence within the C-terminus region of human GRINL1A. The exact sequence is proprietary.
Isotype:	IgG
Cross-Reactivity:	Human
Characteristics:	Rabbit polyclonal antibody to GRINL1A GRINL1A antibody
Purification:	Purified by antigen-affinity chromatography.

Target Details

Target:	GCOM1
---------	-------

Target Details

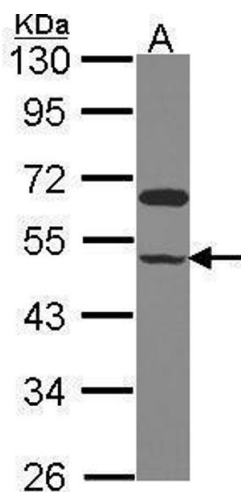
Alternative Name:	GRINL1A complex locus 1 (GCOM1 Products)
Background:	This gene (Gcom1) is part of a complex transcript unit that includes the gene for glutamate receptor, ionotropic, N-methyl D-aspartate-like 1A (GRINL1A). Transcription of this gene occurs at an upstream promoter, with two different groups of alternatively spliced variants: Gup for GRINL1A upstream transcripts and Gcom for GRINL1A combined transcripts. The GRINL1A gene uses a downstream promoter for transcription and also has multiple alternatively spliced variants.
Molecular Weight:	54 kDa
Gene ID:	145781
UniProt:	P0CAP1

Application Details

Application Notes:	WB: 1:500-1:3000. Optimal dilutions/concentrations should be determined by the researcher. Not tested in other applications.
Comment:	Positive Control: HeLa
Restrictions:	For Research Use only

Handling

Format:	Liquid
Concentration:	0.39 mg/mL
Buffer:	0.1M Tris-Glycine (pH 7), 20 % Glycerol, 0.01 % Thimerosal
Preservative:	Thimerosal (Merthiolate)
Precaution of Use:	This product contains Thimerosal (Merthiolate): a POISONOUS AND HAZARDOUS SUBSTANCE which should be handled by trained staff only.
Storage:	4 °C,-20 °C
Storage Comment:	Store as concentrated solution. Centrifuge briefly prior to opening vial. For short-term storage (1-2 weeks), store at 4°C. For long-term storage, aliquot and store at -20°C or below. Avoid multiple freeze-thaw cycles.



Western Blotting

Image 1. WB Image Sample (30 ug of whole cell lysate) A:
Hela 10% SDS PAGE antibody diluted at 1:1000