

Datasheet for ABIN2854571

anti-Surfactant Protein A1 antibody (Center)**1** Image[Go to Product page](#)

Overview

Quantity:	100 µL
Target:	Surfactant Protein A1 (SFTPA1)
Binding Specificity:	Center
Reactivity:	Human, Mouse
Host:	Rabbit
Clonality:	Polyclonal
Conjugate:	This Surfactant Protein A1 antibody is un-conjugated
Application:	Western Blotting (WB)

Product Details

Immunogen:	Recombinant protein encompassing a sequence within the center region of human Surfactant Protein A. The exact sequence is proprietary.
Isotype:	IgG
Characteristics:	Rabbit Polyclonal antibody to Surfactant Protein A (surfactant, pulmonary-associated protein A2B) Surfactant Protein A antibody
Purification:	Purified by antigen-affinity chromatography.

Target Details

Target:	Surfactant Protein A1 (SFTPA1)
Alternative Name:	Surfactant Protein A (SFTPA1 Products)

Target Details

Background: DISCONTINUED: This record has been withdrawn by the HUGO Gene Nomenclature Committee (HGNC), and it has been determined that the sequence is redundant with SFTPA2 (GeneID:729238) in the GRCh37.1 reference assembly.

Molecular Weight: 26 kDa

Gene ID: 6436

Application Details

Application Notes: Suggested dilution Reference Western blot 1:500-1:3000* Not tested in other applications.
Optimal dilutions/concentrations should be determined by the researcher.Suggested dilutionReferenceWestern blot1:500-1:3000

Comment: Positive Control: mouse lung

Restrictions: For Research Use only

Handling

Format: Liquid

Concentration: 1 mg/mL

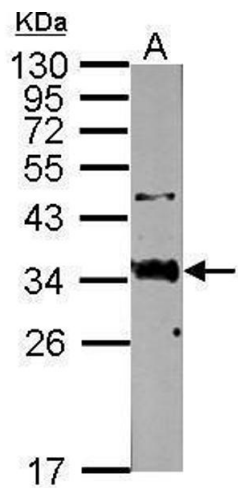
Buffer: 0.1M Tris, 0.1M Glycine, 20 % Glycerol (pH 7). 0.01 % Thimerosal was added as a preservative.

Preservative: Thimerosal (Merthiolate)

Precaution of Use: This product contains Thimerosal (Merthiolate): a POISONOUS AND HAZARDOUS SUBSTANCE which should be handled by trained staff only.

Storage: -20 °C

Storage Comment: Keep as concentrated solution. Aliquot and store at -20°C or below. Avoid multiple freeze-thaw cycles.



Western Blotting

Image 1. WB Image Sample (50 ug of whole cell lysate) A:
mouse lung 12% SDS PAGE antibody diluted at 1:500