

Datasheet for ABIN2854574
anti-TATDN3 antibody (Center)



[Go to Product page](#)

2 Images

Overview

Quantity:	100 µL
Target:	TATDN3
Binding Specificity:	Center
Reactivity:	Human, Mouse
Host:	Rabbit
Clonality:	Polyclonal
Conjugate:	This TATDN3 antibody is un-conjugated
Application:	Western Blotting (WB)

Product Details

Immunogen:	Recombinant protein encompassing a sequence within the center region of human TATDN3. The exact sequence is proprietary.
Isotype:	IgG
Cross-Reactivity:	Cow (Bovine)
Cross-Reactivity (Details):	Bovine (93 %)
Characteristics:	Rabbit Polyclonal antibody to TATDN3 (TatD DNase domain containing 3) TATDN3 antibody
Purification:	Purified by antigen-affinity chromatography.

Target Details

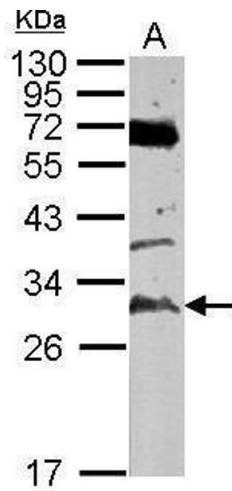
Target:	TATDN3
Alternative Name:	TATDN3 (TATDN3 Products)
Background:	Cellular Localization: Nucleus
Molecular Weight:	30 kDa
Gene ID:	128387

Application Details

Application Notes:	Suggested dilution Reference Western blot 1:500-1:3000* Not tested in other applications. *Optimal dilutions/concentrations should be determined by the researcher.Suggested dilutionReferenceWestern blot1:500-1:3000*
Comment:	Positive Control: NT2D1 , SK-N-SH , mouse testis
Restrictions:	For Research Use only

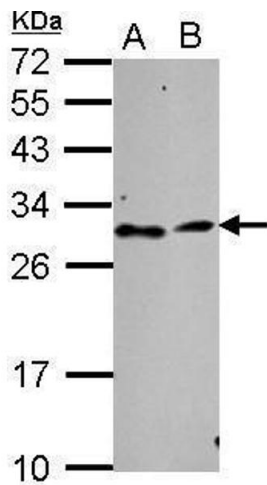
Handling

Format:	Liquid
Concentration:	1 mg/mL
Buffer:	1XPBS, 1 % BSA, 20 % Glycerol (pH 7). 0.01 % Thimerosal was added as a preservative.
Preservative:	Thimerosal (Merthiolate)
Precaution of Use:	This product contains Thimerosal (Merthiolate): a POISONOUS AND HAZARDOUS SUBSTANCE which should be handled by trained staff only.
Storage:	-20 °C
Storage Comment:	Keep as concentrated solution. Aliquot and store at -20°C or below. Avoid multiple freeze-thaw cycles.



Western Blotting

Image 1. WB Image Sample (50 ug of whole cell lysate) A: mouse testis 12% SDS PAGE antibody diluted at 1:500



Western Blotting

Image 2. WB Image Sample (30 ug of whole cell lysate) A: NT2D1 B: SK-N-SH 12% SDS PAGE antibody diluted at 1:1000