



Datasheet for ABIN2854575
anti-C11orf85 antibody (Center)



[Go to Product page](#)

2 Images

Overview

| | |
|----------------------|---|
| Quantity: | 100 µL |
| Target: | C11orf85 |
| Binding Specificity: | Center |
| Reactivity: | Human |
| Host: | Rabbit |
| Clonality: | Polyclonal |
| Conjugate: | This C11orf85 antibody is un-conjugated |
| Application: | Western Blotting (WB), Immunocytochemistry (ICC), Immunofluorescence (IF) |

Product Details

| | |
|------------------|---|
| Immunogen: | Recombinant protein encompassing a sequence within the center region of human LOC283129. The exact sequence is proprietary. |
| Isotype: | IgG |
| Characteristics: | Rabbit Polyclonal antibody to LOC283129 (chromosome 11 open reading frame 85) LOC283129 antibody [N1C3] |
| Purification: | Purified by antigen-affinity chromatography. |

Target Details

| | |
|-------------------|---|
| Target: | C11orf85 |
| Alternative Name: | LOC283129 (C11orf85 Products) |

Target Details

Molecular Weight: 25 kDa

Gene ID: 283129

Application Details

Application Notes: Suggested dilution Reference ICC/IF 1:100-1:1000* Western blot 1:500-1:3000* Not tested in other applications. *Optimal dilutions/concentrations should be determined by the researcher.Suggested dilutionReferenceICC/IF1:100-1:1000* Western blot1:500-1:3000*

Comment: Positive Control: 293T , A431 , HeLa , HepG2 , Molt-4 , Raji

Restrictions: For Research Use only

Handling

Format: Liquid

Concentration: 1 mg/mL

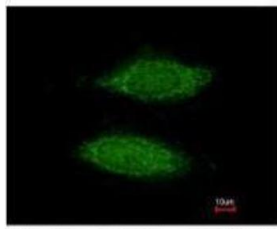
Buffer: 0.1M Tris, 0.1M Glycine, 20 % Glycerol (pH 7). 0.01 % Thimerosal was added as a preservative.

Preservative: Thimerosal (Merthiolate)

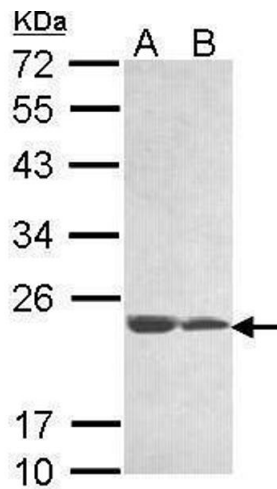
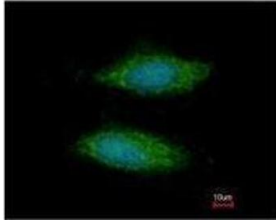
Precaution of Use: This product contains Thimerosal (Merthiolate): a POISONOUS AND HAZARDOUS SUBSTANCE which should be handled by trained staff only.

Storage: -20 °C

Storage Comment: Keep as concentrated solution. Aliquot and store at -20°C or below. Avoid multiple freeze-thaw cycles.



Costained with Hoechst 33342



Immunofluorescence

Image 1. ICC/IF Image Immunofluorescence analysis of methanol-fixed HeLa, using LOC283129, antibody at 1:200 dilution.

Western Blotting

Image 2. WB Image Sample (30 ug of whole cell lysate) A: 293T B: A431 , 12% SDS PAGE antibody diluted at 1:1000