

Datasheet for ABIN2854579  
**anti-DNAI2 antibody (C-Term)**[Go to Product page](#)

## 1 Image

## Overview

Quantity:	100 µL
Target:	DNAI2
Binding Specificity:	C-Term
Reactivity:	Human
Host:	Rabbit
Clonality:	Polyclonal
Conjugate:	This DNAI2 antibody is un-conjugated
Application:	Western Blotting (WB)

## Product Details

Immunogen:	Recombinant protein encompassing a sequence within the C-terminus region of human DNAI2. The exact sequence is proprietary.
Isotype:	IgG
Cross-Reactivity:	Human
Characteristics:	Rabbit polyclonal antibody to DNAI2 (dynein, axonemal, intermediate chain 2) DNAI2 antibody [C1C3]
Purification:	Purified by antigen-affinity chromatography.

## Target Details

Target:	DNAI2
---------	-------

## Target Details

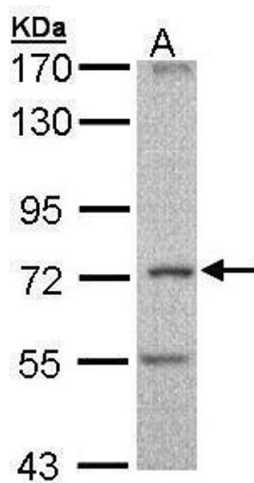
Alternative Name:	dynein axonemal intermediate chain 2 ( <a href="#">DNAI2 Products</a> )
Background:	The protein encoded by this gene belongs to the dynein intermediate chain family, and is part of the dynein complex of respiratory cilia and sperm flagella. Mutations in this gene are associated with primary ciliary dyskinesia type 9. Alternatively spliced transcript variants encoding different isoforms have been noted for this gene.
Molecular Weight:	69 kDa
Gene ID:	64446
UniProt:	<a href="#">Q9GZS0</a>

## Application Details

Application Notes:	WB: 1:500-1:3000. Optimal dilutions/concentrations should be determined by the researcher. Not tested in other applications.
Comment:	Positive Control: Molt-4
Restrictions:	For Research Use only

## Handling

Format:	Liquid
Concentration:	0.77 mg/mL
Buffer:	0.1M Tris-Glycine ( pH 7), 10 % Glycerol, 0.01 % Thimerosal
Preservative:	Thimerosal (Merthiolate)
Precaution of Use:	This product contains Thimerosal (Merthiolate): a POISONOUS AND HAZARDOUS SUBSTANCE which should be handled by trained staff only.
Storage:	4 °C,-20 °C
Storage Comment:	Store as concentrated solution. Centrifuge briefly prior to opening vial. For short-term storage (1-2 weeks), store at 4°C. For long-term storage, aliquot and store at -20°C or below. Avoid multiple freeze-thaw cycles.



Western Blotting

**Image 1.** WB Image Sample (30 ug of whole cell lysate) A:  
Molt-4 , 7.5 % SDS PAGE antibody diluted at 1:1000