



[Go to Product page](#)

Datasheet for ABIN2854581  
**anti-GLIPR1L1 antibody (Center)**

1 Image

### Overview

Quantity:	100 µL
Target:	GLIPR1L1
Binding Specificity:	Center
Reactivity:	Human
Host:	Rabbit
Clonality:	Polyclonal
Conjugate:	This GLIPR1L1 antibody is un-conjugated
Application:	Western Blotting (WB)

### Product Details

Immunogen:	Recombinant protein encompassing a sequence within the center region of human GLIPR1L1. The exact sequence is proprietary.
Isotype:	IgG
Characteristics:	Rabbit Polyclonal antibody to GLIPR1L1 (GLI pathogenesis-related 1 like 1) GLIPR1L1 antibody
Purification:	Purified by antigen-affinity chromatography.

### Target Details

Target:	GLIPR1L1
Alternative Name:	GLIPR1L1 ( <a href="#">GLIPR1L1 Products</a> )

## Target Details

---

Background: Cellular Localization: Secreted

Molecular Weight: 27 kDa

Gene ID: 256710

## Application Details

---

Application Notes: Suggested dilution Reference Western blot 1:500-1:3000\* Not tested in other applications.  
\*Optimal dilutions/concentrations should be determined by the researcher.Suggested dilutionReferenceWestern blot1:500-1:3000\*

Comment: Positive Control: NT2D1 , PC-3 , U87-MG

Restrictions: For Research Use only

## Handling

---

Format: Liquid

Concentration: 0.55 mg/mL

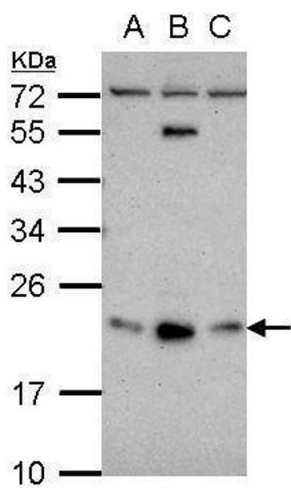
Buffer: 0.1M Tris, 0.1M Glycine, 20 % Glycerol ( pH 7). 0.01 % Thimerosal was added as a preservative.

Preservative: Thimerosal (Merthiolate)

Precaution of Use: This product contains Thimerosal (Merthiolate): a POISONOUS AND HAZARDOUS SUBSTANCE which should be handled by trained staff only.

Storage: -20 °C

Storage Comment: Keep as concentrated solution. Aliquot and store at -20°C or below. Avoid multiple freeze-thaw cycles.



### Western Blotting

**Image 1.** WB Image Sample (30 ug of whole cell lysate) A: NT2D1 B: PC-3 C: U87-MG 12% SDS PAGE antibody diluted at 1:500