

Datasheet for ABIN2854585

**anti-FBXO15 antibody****2** Images[Go to Product page](#)

## Overview

Quantity:	100 µL
Target:	FBXO15
Reactivity:	Human
Host:	Rabbit
Clonality:	Polyclonal
Conjugate:	This FBXO15 antibody is un-conjugated
Application:	Western Blotting (WB)

## Product Details

Immunogen:	Recombinant protein encompassing a sequence within the center region of human FBXO15. The exact sequence is proprietary.
Isotype:	IgG
Cross-Reactivity:	Human
Characteristics:	Rabbit Polyclonal antibody to FBXO15 (F-box protein 15) FBXO15 antibody [N1C1]
Purification:	Purified by antigen-affinity chromatography.

## Target Details

Target:	FBXO15
Alternative Name:	F-box protein 15 ( <a href="#">FBXO15 Products</a> )

## Target Details

**Background:** Members of the F-box protein family, such as FBXO15, are characterized by an approximately 40-amino acid F-box motif. SCF complexes, formed by SKP1 (MIM 601434), cullin (see CUL1, MIM 603134), and F-box proteins, act as protein-ubiquitin ligases. F-box proteins interact with SKP1 through the F box, and they interact with ubiquitination targets through other protein interaction domains (Jin et al., 2004 [PubMed 15520277]).[supplied by OMIM]

**Molecular Weight:** 57 kDa

**Gene ID:** 201456

**UniProt:** [Q8NCQ5](#)

## Application Details

**Application Notes:** WB: 1:500-1:3000. Optimal dilutions/concentrations should be determined by the researcher.  
Not tested in other applications.

**Comment:** Positive Control: Raji , Human ESC

**Restrictions:** For Research Use only

## Handling

**Format:** Liquid

**Concentration:** 1 mg/mL

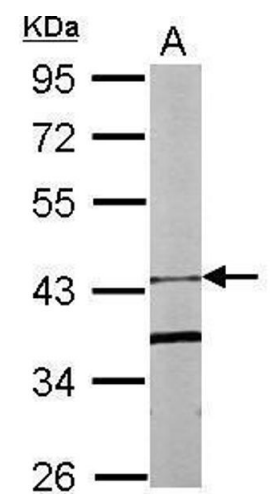
**Buffer:** 0.1M Tris-Glycine ( pH 7), 10 % Glycerol, 0.01 % Thimerosal

**Preservative:** Thimerosal (Merthiolate)

**Precaution of Use:** This product contains Thimerosal (Merthiolate): a POISONOUS AND HAZARDOUS SUBSTANCE which should be handled by trained staff only.

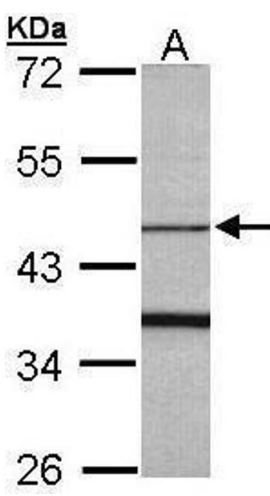
**Storage:** 4 °C,-20 °C

**Storage Comment:** Store as concentrated solution. Centrifuge briefly prior to opening vial. For short-term storage (1-2 weeks), store at 4°C. For long-term storage, aliquot and store at -20°C or below. Avoid multiple freeze-thaw cycles.



**Western Blotting**

**Image 1.** WB Image Sample (20 ug of whole cell lysate) A:  
Human ESC 10% SDS PAGE antibody diluted at 1:1000



**Western Blotting**

**Image 2.** WB Image Sample (30 ug of whole cell lysate) A:  
Raji 10% SDS PAGE antibody diluted at 1:1000