

Datasheet for ABIN2854588  
**anti-CCDC102B antibody**



[Go to Product page](#)

1 Image

## Overview

Quantity:	100 µL
Target:	CCDC102B
Reactivity:	Human
Host:	Rabbit
Clonality:	Polyclonal
Conjugate:	This CCDC102B antibody is un-conjugated
Application:	Western Blotting (WB)

## Product Details

Immunogen:	Recombinant protein encompassing a sequence within the center region of human CCDC102B. The exact sequence is proprietary.
Isotype:	IgG
Cross-Reactivity:	Human
Characteristics:	Rabbit polyclonal antibody to CCDC102B (coiled-coil domain containing 102B) CCDC102B antibody [N3C3]
Purification:	Purified by antigen-affinity chromatography.

## Target Details

Target:	CCDC102B
Alternative Name:	coiled-coil domain containing 102B ( <a href="#">CCDC102B Products</a> )

## Target Details

---

Molecular Weight: 60 kDa

Gene ID: 79839

UniProt: [Q68D86](#)

## Application Details

---

Application Notes: WB: 1:500-1:3000. Optimal dilutions/concentrations should be determined by the researcher.  
Not tested in other applications.

Comment: Positive Control: HepG2 , Molt-4

Restrictions: For Research Use only

## Handling

---

Format: Liquid

Concentration: 0.97 mg/mL

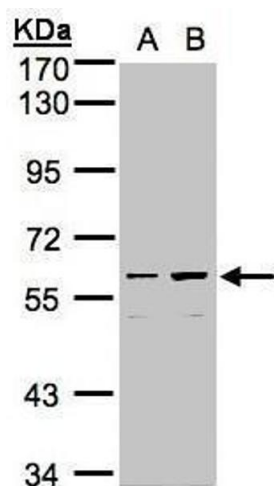
Buffer: 0.1M Tris-Glycine ( pH 7), 10 % Glycerol, 0.01 % Thimerosal

Preservative: Thimerosal (Merthiolate)

Precaution of Use: This product contains Thimerosal (Merthiolate): a POISONOUS AND HAZARDOUS SUBSTANCE which should be handled by trained staff only.

Storage: 4 °C,-20 °C

Storage Comment: Store as concentrated solution. Centrifuge briefly prior to opening vial. For short-term storage (1-2 weeks), store at 4°C. For long-term storage, aliquot and store at -20°C or below. Avoid multiple freeze-thaw cycles.



#### Western Blotting

**Image 1.** WB Image Sample (30µg whole cell lysate) A:Hep G2 , B:MOLT4 , 7.5% SDS PAGE antibody diluted at 1:1000