

Datasheet for ABIN2854594
anti-XYLB antibody (C-Term)[Go to Product page](#)

1 Image

Overview

Quantity:	100 µL
Target:	XYLB
Binding Specificity:	C-Term
Reactivity:	Human
Host:	Rabbit
Clonality:	Polyclonal
Conjugate:	This XYLB antibody is un-conjugated
Application:	Western Blotting (WB)

Product Details

Immunogen:	Carrier-protein conjugated synthetic peptide encompassing a sequence within the C-terminus region of human XYLB. The exact sequence is proprietary.
Isotype:	IgG
Characteristics:	Rabbit polyclonal antibody to XYLB (xylulokinase homolog (H. influenzae)) XYLB antibody [C3], C-term
Purification:	Purified by antigen-affinity chromatography.

Target Details

Target:	XYLB
Alternative Name:	XYLB (XYLB Products)

Target Details

Background: The protein encoded by this gene shares 22 % sequence identity with Hemophilus influenzae xylulokinase, and even higher identity to other gene products in C.elegans (45 %) and yeast (31-35 %), which are thought to belong to a family of enzymes that include fucokinase, gluconokinase, glycerokinase and xylulokinase. These proteins play important roles in energy metabolism. Multiple transcripts resulting from use of alternate polyadenylation sites have been noted for this gene.

Molecular Weight: 58 kDa

Gene ID: 9942

Application Details

Application Notes: Suggested dilution Reference Western blot 1:500-1:3000* Not tested in other applications.
Optimal dilutions/concentrations should be determined by the researcher.Suggested dilutionReferenceWestern blot1:500-1:3000

Comment: Positive Control: 293T , A431 , H1299

Restrictions: For Research Use only

Handling

Format: Liquid

Concentration: 1 mg/mL

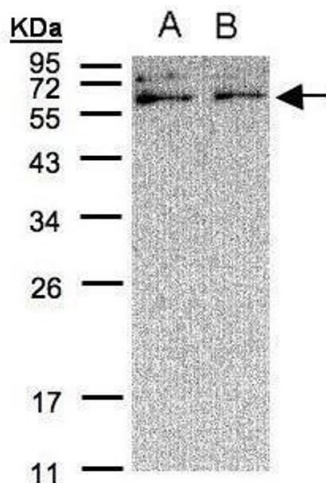
Buffer: 0.1M Tris, 0.1M Glycine, 10 % Glycerol (pH 7). 0.01 % Thimerosal was added as a preservative.

Preservative: Thimerosal (Merthiolate)

Precaution of Use: This product contains Thimerosal (Merthiolate): a POISONOUS AND HAZARDOUS SUBSTANCE which should be handled by trained staff only.

Storage: -20 °C

Storage Comment: Keep as concentrated solution. Aliquot and store at -20°C or below. Avoid multiple freeze-thaw cycles.



Western Blotting

Image 1. WB Image Sample(30 µg of whole cell lysate)
A:A431, B:H1299 12% SDS PAGE antibody diluted at 1:500