

Datasheet for ABIN2854596
anti-TJP1 antibody (C-Term)[Go to Product page](#)

2 Images

Overview

Quantity:	100 µL
Target:	TJP1
Binding Specificity:	C-Term
Reactivity:	Human
Host:	Rabbit
Clonality:	Polyclonal
Conjugate:	This TJP1 antibody is un-conjugated
Application:	Western Blotting (WB)

Product Details

Immunogen:	Recombinant protein encompassing a sequence within the C-terminus region of human ZO-1. The exact sequence is proprietary.
Isotype:	IgG
Cross-Reactivity:	Human
Characteristics:	Rabbit polyclonal antibody to ZO-1 (tight junction protein 1 (zona occludens 1)) ZO-1 antibody [C3], C-term
Purification:	Purified by antigen-affinity chromatography.
Grade:	KO Validated

Target Details

Target:	TJP1
Alternative Name:	tight junction protein 1 (TJP1 Products)
Background:	<p>This gene encodes a protein located on a cytoplasmic membrane surface of intercellular tight junctions. The encoded protein may be involved in signal transduction at cell-cell junctions. Two transcript variants encoding distinct isoforms have been identified for this gene.</p> <p>Cellular Localization: Cell membrane, Peripheral membrane protein, Cytoplasmic side , Cell junction , tight junction</p>
Molecular Weight:	195 kDa
Gene ID:	7082
UniProt:	Q07157
Pathways:	Carbohydrate Homeostasis , Cell-Cell Junction Organization

Application Details

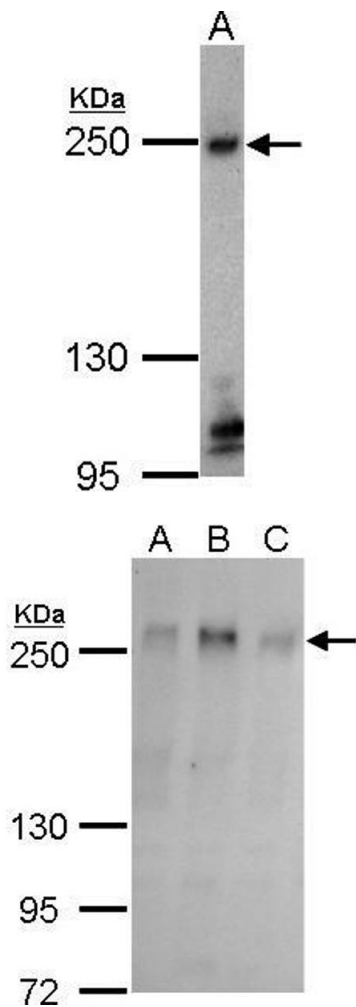
Application Notes:	WB: 1:500-1:3000. Optimal dilutions/concentrations should be determined by the researcher. Not tested in other applications.
Comment:	Positive Control: HCT116 , 293T , A431 , HeLa Validation: KO/KD
Restrictions:	For Research Use only

Handling

Format:	Liquid
Concentration:	1 mg/mL
Buffer:	1XPBS (pH 7), 1 % BSA, 20 % Glycerol, 0.01 % Thimerosal
Preservative:	Thimerosal (Merthiolate)
Precaution of Use:	This product contains Thimerosal (Merthiolate): a POISONOUS AND HAZARDOUS SUBSTANCE which should be handled by trained staff only.
Storage:	4 °C,-20 °C
Storage Comment:	Store as concentrated solution. Centrifuge briefly prior to opening vial. For short-term storage (1-2 weeks), store at 4°C. For long-term storage, aliquot and store at -20°C or below. Avoid

multiple freeze-thaw cycles.

Validation report #104342 for Multiplex Immunohistochemistry (mIHC)



Western Blotting

Image 1. WB Image Sample (30 ug of whole cell lysate)

Western Blotting

Image 2. WB Image ZO-1 antibody detects ZO-1 protein by western blot analysis. A. 30 µg 293T whole cell lysate/extract B. 30 µg A431 whole cell lysate/extract C. 30 µg HeLa whole cell lysate/extract 5 % SDS-PAGE ZO-1 antibody , dilution: 1:500