

Datasheet for ABIN2854599  
**anti-PLCH1 antibody (N-Term)**[Go to Product page](#)

## 1 Image

## Overview

Quantity:	100 µL
Target:	PLCH1 (PLCh1)
Binding Specificity:	N-Term
Reactivity:	Human
Host:	Rabbit
Clonality:	Polyclonal
Conjugate:	This PLCH1 antibody is un-conjugated
Application:	Western Blotting (WB)

## Product Details

Immunogen:	Recombinant protein encompassing a sequence within the N-terminus region of human PLCH1. The exact sequence is proprietary.
Isotype:	IgG
Cross-Reactivity:	Human
Characteristics:	Rabbit polyclonal antibody to PLCH1 (phospholipase C, eta 1) PLCH1 antibody [N1N2-2], N-term
Purification:	Purified by antigen-affinity chromatography.

## Target Details

Target:	PLCH1 (PLCh1)
---------	---------------

## Target Details

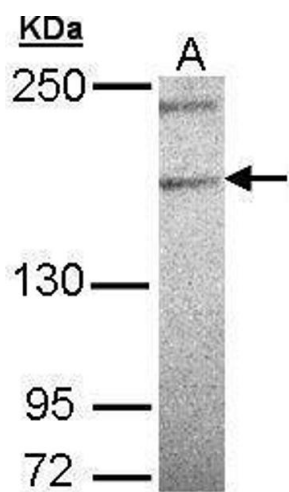
Alternative Name:	phospholipase C eta 1 ( <a href="#">PLCh1 Products</a> )
Background:	PLCH1 is a member of the PLC-eta family of the phosphoinositide-specific phospholipase C (PLC) superfamily of enzymes that cleave phosphatidylinositol 4,5-bisphosphate (PtdIns(4,5)P2) to generate second messengers inositol 1,4,5-trisphosphate (IP3) and diacylglycerol (DAG) (Hwang et al., 2005 [PubMed 15702972]).[supplied by OMIM]  Cellular Localization: Cytoplasm , Membrane
Molecular Weight:	189 kDa
Gene ID:	23007
UniProt:	<a href="#">Q4KWH8</a>

## Application Details

Application Notes:	WB: 1:500-1:3000. Optimal dilutions/concentrations should be determined by the researcher. Not tested in other applications.
Comment:	Positive Control: 293T
Restrictions:	For Research Use only

## Handling

Format:	Liquid
Concentration:	1 mg/mL
Buffer:	0.1M Tris-Glycine ( pH 7), 10 % Glycerol, 0.01 % Thimerosal
Preservative:	Thimerosal (Merthiolate)
Precaution of Use:	This product contains Thimerosal (Merthiolate): a POISONOUS AND HAZARDOUS SUBSTANCE which should be handled by trained staff only.
Storage:	4 °C,-20 °C
Storage Comment:	Store as concentrated solution. Centrifuge briefly prior to opening vial. For short-term storage (1-2 weeks), store at 4°C. For long-term storage, aliquot and store at -20°C or below. Avoid multiple freeze-thaw cycles.



Western Blotting

**Image 1.** WB Image Sample (30 ug of whole cell lysate) A:  
293T 5% SDS PAGE antibody diluted at 1:500