



Datasheet for ABIN2854604
anti-C9orf96 antibody (C-Term)



[Go to Product page](#)

2 Images

Overview

Quantity:	100 µL
Target:	C9orf96
Binding Specificity:	C-Term
Reactivity:	Human
Host:	Rabbit
Clonality:	Polyclonal
Conjugate:	This C9orf96 antibody is un-conjugated
Application:	Western Blotting (WB), Immunofluorescence (IF), Immunocytochemistry (ICC)

Product Details

Immunogen:	Recombinant protein encompassing a sequence within the C-terminus region of human LOC169436. The exact sequence is proprietary.
Isotype:	IgG
Characteristics:	Rabbit polyclonal antibody to LOC169436 (chromosome 9 open reading frame 96) LOC169436 antibody
Purification:	Purified by antigen-affinity chromatography.

Target Details

Target:	C9orf96
Alternative Name:	LOC169436 (C9orf96 Products)

Target Details

Molecular Weight: 76 kDa

Gene ID: 169436

Application Details

Application Notes: Suggested dilution Reference ICC/IF 1:100-1:1000* Western blot 1:1000-1:10000* Not tested in other applications. *Optimal dilutions/concentrations should be determined by the researcher.Suggested dilutionReferenceICC/IF1:100-1:1000* Western blot1:1000-1:10000*

Comment: Positive Control: 293T , A431 , H1299 , HeLaS3 , HepG2 , Molt-4 , Raji

Restrictions: For Research Use only

Handling

Format: Liquid

Concentration: 1 mg/mL

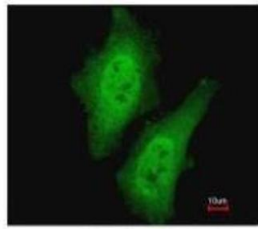
Buffer: 0.1M Tris, 0.1M Glycine, 10 % Glycerol (pH 7). 0.01 % Thimerosal was added as a preservative.

Preservative: Thimerosal (Merthiolate)

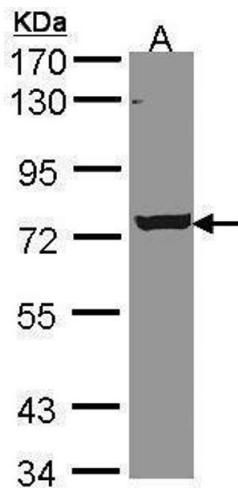
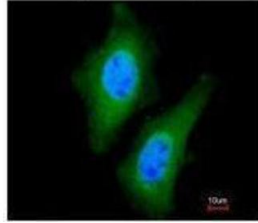
Precaution of Use: This product contains Thimerosal (Merthiolate): a POISONOUS AND HAZARDOUS SUBSTANCE which should be handled by trained staff only.

Storage: -20 °C

Storage Comment: Keep as concentrated solution. Aliquot and store at -20°C or below. Avoid multiple freeze-thaw cycles.



Merged with DNA probe



Immunofluorescence

Image 1. ICC/IF Image Immunofluorescence analysis of paraformaldehyde-fixed HeLa, using LOC169436, antibody at 1:200 dilution.

Western Blotting

Image 2. WB Image Sample (30 µg of whole cell lysate) A: A431, 7.5% SDS PAGE antibody diluted at 1:5000