

Datasheet for ABIN2854605

anti-PSPH antibody**2** Images[Go to Product page](#)

Overview

Quantity:	100 µL
Target:	PSPH
Reactivity:	Human
Host:	Rabbit
Clonality:	Polyclonal
Conjugate:	This PSPH antibody is un-conjugated
Application:	Western Blotting (WB), Immunocytochemistry (ICC), Immunofluorescence (IF)

Product Details

Immunogen:	Full length human PSPH Recombinant protein.
Isotype:	IgG
Cross-Reactivity:	Human
Characteristics:	Rabbit polyclonal antibody to PSPH (phosphoserine phosphatase) PSPH antibody
Purification:	Purified by antigen-affinity chromatography.

Target Details

Target:	PSPH
Alternative Name:	phosphoserine phosphatase (PSPH Products)
Background:	The protein encoded by this gene belongs to a subfamily of the phosphotransferases. This

Target Details

encoded enzyme is responsible for the third and last step in L-serine formation. It catalyzes magnesium-dependent hydrolysis of L-phosphoserine and is also involved in an exchange reaction between L-serine and L-phosphoserine. Deficiency of this protein is thought to be linked to Williams syndrome.

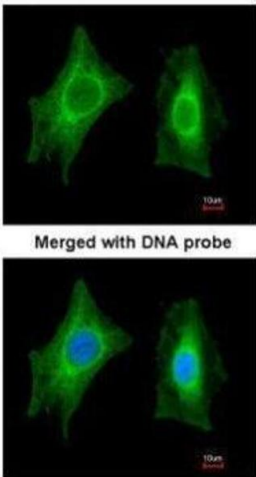
Molecular Weight:	25 kDa
Gene ID:	5723
UniProt:	P78330
Pathways:	Warburg Effect

Application Details

Application Notes:	WB: 1:500-1:3000. ICC/IF: 1:100-1:1000. Optimal dilutions/concentrations should be determined by the researcher. Not tested in other applications.
Restrictions:	For Research Use only

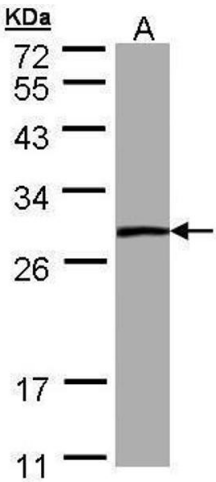
Handling

Format:	Liquid
Concentration:	1 mg/mL
Buffer:	0.1M Tris-Glycine (pH 7), 10 % Glycerol, 0.01 % Thimerosal
Preservative:	Thimerosal (Merthiolate)
Precaution of Use:	This product contains Thimerosal (Merthiolate): a POISONOUS AND HAZARDOUS SUBSTANCE which should be handled by trained staff only.
Storage:	4 °C,-20 °C
Storage Comment:	Store as concentrated solution. Centrifuge briefly prior to opening vial. For short-term storage (1-2 weeks), store at 4°C. For long-term storage, aliquot and store at -20°C or below. Avoid multiple freeze-thaw cycles.



Immunofluorescence

Image 1. ICC/IF Image Immunofluorescence analysis of paraformaldehyde-fixed HeLa, using PSPH, antibody at 1:200 dilution.



Western Blotting

Image 2. WB Image Sample (30 ug of whole cell lysate) A: A431 12% SDS PAGE antibody diluted at 1:1000