



[Go to Product page](#)

Datasheet for ABIN2854607

anti-PEX6 antibody

1 Image

Overview

Quantity:	100 µL
Target:	PEX6
Reactivity:	Human
Host:	Rabbit
Clonality:	Polyclonal
Conjugate:	This PEX6 antibody is un-conjugated
Application:	Western Blotting (WB)

Product Details

Immunogen:	Recombinant protein encompassing a sequence within the center region of human PEX6. The exact sequence is proprietary.
Isotype:	IgG
Cross-Reactivity:	Human
Characteristics:	Rabbit polyclonal antibody to PEX6 (peroxisomal biogenesis factor 6) PEX6 antibody
Purification:	Purified by antigen-affinity chromatography.

Target Details

Target:	PEX6
Alternative Name:	peroxisomal biogenesis factor 6 (PEX6 Products)

Target Details

Background: This gene encodes a member of the AAA (ATPases associated with diverse cellular activities) family of ATPases. This member is a predominantly cytoplasmic protein, which plays a direct role in peroxisomal protein import and is required for PTS1 (peroxisomal targeting signal 1, a C-terminal tripeptide of the sequence ser-lys-leu) receptor activity. Mutations in this gene cause peroxisome biogenesis disorders of complementation group 4 and complementation group 6.

Cellular Localization: Cytoplasm , Peroxisome membrane

Molecular Weight: 104 kDa

Gene ID: 5190

UniProt: [Q13608](#)

Application Details

Application Notes: WB: 1:500-1:3000. Optimal dilutions/concentrations should be determined by the researcher. Not tested in other applications.

Comment: Positive Control: A549

Restrictions: For Research Use only

Handling

Format: Liquid

Concentration: 1 mg/mL

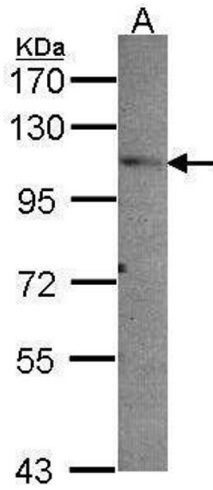
Buffer: 0.1M Tris-Glycine (pH 7), 10 % Glycerol, 0.01 % Thimerosal

Preservative: Thimerosal (Merthiolate)

Precaution of Use: This product contains Thimerosal (Merthiolate): a POISONOUS AND HAZARDOUS SUBSTANCE which should be handled by trained staff only.

Storage: 4 °C, -20 °C

Storage Comment: Store as concentrated solution. Centrifuge briefly prior to opening vial. For short-term storage (1-2 weeks), store at 4°C. For long-term storage, aliquot and store at -20°C or below. Avoid multiple freeze-thaw cycles.



Western Blotting

Image 1. WB Image Sample (30 ug of whole cell lysate) A:
A549 7.5% SDS PAGE antibody diluted at 1:1000