

Datasheet for ABIN2854609

**anti-Fukutin antibody****2** Images[Go to Product page](#)

## Overview

Quantity:	100 µL
Target:	Fukutin (FKTN)
Reactivity:	Human
Host:	Rabbit
Clonality:	Polyclonal
Conjugate:	This Fukutin antibody is un-conjugated
Application:	Western Blotting (WB), Immunohistochemistry (Paraffin-embedded Sections) (IHC (p)), Immunofluorescence (IF), Immunocytochemistry (ICC)

## Product Details

Immunogen:	Recombinant protein encompassing a sequence within the center region of human Fukutin. The exact sequence is proprietary.
Isotype:	IgG
Cross-Reactivity:	Human
Characteristics:	Rabbit Polyclonal antibody to Fukutin (fukutin) Fukutin antibody [N3C3-2]
Purification:	Purified by antigen-affinity chromatography.

## Target Details

Target:	Fukutin (FKTN)
Alternative Name:	fukutin ( <a href="#">FKTN Products</a> )

## Target Details

**Background:** The protein encoded by this gene is a putative transmembrane protein that is localized to the cis-Golgi compartment, where it may be involved in the glycosylation of alpha-dystroglycan in skeletal muscle. The encoded protein is thought to be a glycosyltransferase and could play a role in brain development. Defects in this gene are a cause of Fukuyama-type congenital muscular dystrophy (FCMD), Walker-Warburg syndrome (WWS), limb-girdle muscular dystrophy type 2M (LGMD2M), and dilated cardiomyopathy type 1X (CMD1X). Two transcript variants encoding the same protein have been found for this gene.

**Molecular Weight:** 54 kDa

**Gene ID:** 2218

**UniProt:** [O75072](#)

**Pathways:** [Regulation of Carbohydrate Metabolic Process](#)

## Application Details

**Application Notes:** WB: 1:500-1:3000. ICC/IF: 1:100-1:1000. Optimal dilutions/concentrations should be determined by the researcher. Not tested in other applications.

**Comment:** Positive Control: H1299 , HeLa

**Restrictions:** For Research Use only

## Handling

**Format:** Liquid

**Concentration:** 1 mg/mL

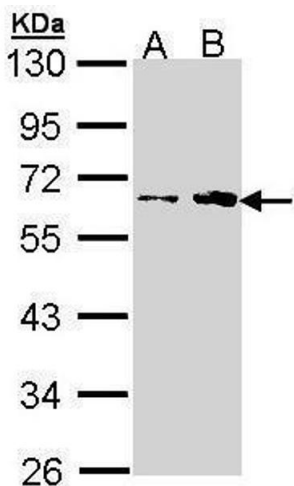
**Buffer:** 0.1M Tris-Glycine ( pH 7), 10 % Glycerol, 0.01 % Thimerosal

**Preservative:** Thimerosal (Merthiolate)

**Precaution of Use:** This product contains Thimerosal (Merthiolate): a POISONOUS AND HAZARDOUS SUBSTANCE which should be handled by trained staff only.

**Storage:** 4 °C,-20 °C

**Storage Comment:** Store as concentrated solution. Centrifuge briefly prior to opening vial. For short-term storage (1-2 weeks), store at 4°C. For long-term storage, aliquot and store at -20°C or below. Avoid multiple freeze-thaw cycles.



Western Blotting

**Image 1.** WB Image Sample (30 ug of whole cell lysate) A: H1299 B: HeLa 10% SDS PAGE antibody diluted at 1:1000



Costained with Hoechst 33342



Immunofluorescence

**Image 2.** ICC/IF Image Immunofluorescence analysis of methanol-fixed HeLa, using Fukutin, antibody at 1:200 dilution.