



Datasheet for ABIN2854610
anti-BBS12 antibody



[Go to Product page](#)

1 Image

Overview

Quantity:	100 µL
Target:	BBS12
Reactivity:	Human
Host:	Rabbit
Clonality:	Polyclonal
Conjugate:	This BBS12 antibody is un-conjugated
Application:	Western Blotting (WB)

Product Details

Immunogen:	Recombinant protein encompassing a sequence within the center region of human BBS12. The exact sequence is proprietary.
Isotype:	IgG
Cross-Reactivity:	Human
Characteristics:	Rabbit polyclonal antibody to BBS12 (Bardet-Biedl syndrome 12) FLJ35630 antibody [C1C3]
Purification:	Purified by antigen-affinity chromatography.

Target Details

Target:	BBS12
Alternative Name:	Bardet-Biedl syndrome 12 (BBS12 Products)

Target Details

Background: The protein encoded by this gene is part of a complex that is involved in membrane trafficking. The encoded protein is a molecular chaperone that aids in protein folding upon ATP hydrolysis. This protein also plays a role in adipocyte differentiation. Defects in this gene are a cause of Bardet-Biedl syndrome type 12. Two transcript variants encoding the same protein have been found for this gene.

Molecular Weight: 79 kDa

Gene ID: 166379

UniProt: [Q6ZW61](#)

Application Details

Application Notes: WB: 1:500-1:3000. Optimal dilutions/concentrations should be determined by the researcher. Not tested in other applications.

Comment: Positive Control: HepG2

Restrictions: For Research Use only

Handling

Format: Liquid

Concentration: 1 mg/mL

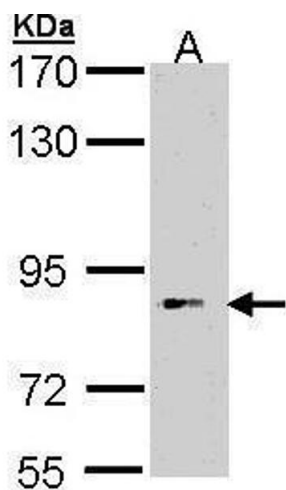
Buffer: 0.1M Tris-Glycine (pH 7), 10 % Glycerol, 0.01 % Thimerosal

Preservative: Thimerosal (Merthiolate)

Precaution of Use: This product contains Thimerosal (Merthiolate): a POISONOUS AND HAZARDOUS SUBSTANCE which should be handled by trained staff only.

Storage: 4 °C,-20 °C

Storage Comment: Store as concentrated solution. Centrifuge briefly prior to opening vial. For short-term storage (1-2 weeks), store at 4°C. For long-term storage, aliquot and store at -20°C or below. Avoid multiple freeze-thaw cycles.



Western Blotting

Image 1. WB Image Sample (30 ug of whole cell lysate) A:
Hep G2 , 7.5% SDS PAGE antibody diluted at 1:1000