

Datasheet for ABIN2854611

**anti-NUF2 antibody****3** Images[Go to Product page](#)

## Overview

Quantity:	100 µL
Target:	NUF2
Reactivity:	Human
Host:	Rabbit
Clonality:	Polyclonal
Conjugate:	This NUF2 antibody is un-conjugated
Application:	Western Blotting (WB), Immunofluorescence (IF), Immunocytochemistry (ICC)

## Product Details

Isotype:	IgG
Characteristics:	Rabbit Polyclonal antibody to CDCA1 (kinetochore protein Nuf2) CDCA1 antibody
Purification:	Purified by antigen-affinity chromatography.

## Target Details

Target:	NUF2
Alternative Name:	CDCA1 ( <a href="#">NUF2 Products</a> )
Background:	This gene encodes a protein that is highly similar to yeast Nuf2, a component of a conserved protein complex associated with the centromere. Yeast Nuf2 disappears from the centromere during meiotic prophase when centromeres lose their connection to the spindle pole body, and plays a regulatory role in chromosome segregation. The encoded protein is found to be

## Target Details

associated with centromeres of mitotic HeLa cells, which suggests that this protein is a functional homolog of yeast Nuf2. Alternatively spliced transcript variants that encode the same protein have been described.

Cellular Localization: Nucleus , Kinetochore

Molecular Weight: 54 kDa

Gene ID: 83540

Pathways: [Maintenance of Protein Location](#)

## Application Details

Application Notes: Suggested dilution Reference ICC/IF 1:100-1:1000\* Western blot 1:1000-1:10000\* Not tested in other applications. \*Optimal dilutions/concentrations should be determined by the researcher.Suggested dilutionReferenceICC/IF1:100-1:1000\* Western blot1:1000-1:10000\*

Comment: Positive Control: HeLa nucleus

Restrictions: For Research Use only

## Handling

Format: Liquid

Concentration: 0.35 mg/mL

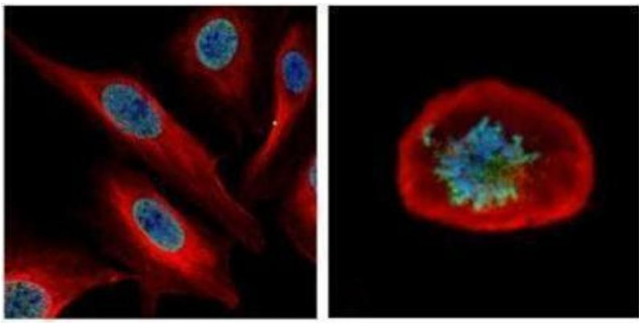
Buffer: 0.1M Tris, 0.1M Glycine, 10 % Glycerol ( pH 7). 0.01 % Thimerosal was added as a preservative.

Preservative: Thimerosal (Merthiolate)

Precaution of Use: This product contains Thimerosal (Merthiolate): a POISONOUS AND HAZARDOUS SUBSTANCE which should be handled by trained staff only.

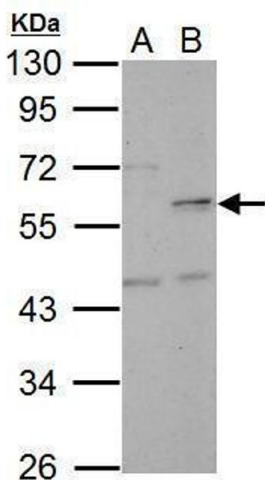
Storage: -20 °C

Storage Comment: Keep as concentrated solution. Aliquot and store at -20°C or below. Avoid multiple freeze-thaw cycles.



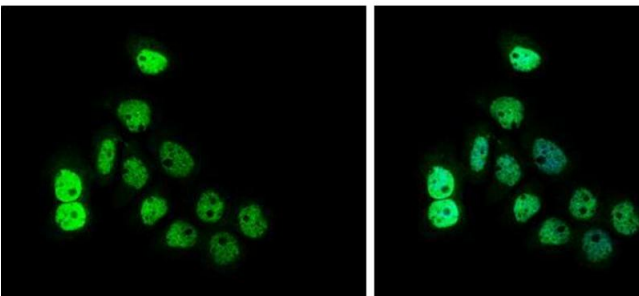
### Immunofluorescence

**Image 1.** ICC/IF Image Confocal immunofluorescence analysis (Olympus FV10i) of paraformaldehyde-fixed U2OS, using CDCA1, antibody (Geen) at 1:500 dilution. Alpha-tubulin filaments were labeled with (Red) at 1:2000.



### Western Blotting

**Image 2.** WB Image Sample (30 ug of whole cell lysate) A: HeLa B: HeLa nucleus 10% SDS PAGE antibody diluted at 1:5000



### Immunofluorescence

**Image 3.** ICC/IF Image CDCA1 antibody [GT312] detects CDCA1 protein at cytoplasm and nucleus by immunofluorescent analysis. Sample: A431 cells were fixed in 4% paraformaldehyde at RT for 15 min. Green: CDCA1 protein stained by CDCA1 antibody [GT312], diluted at 1:200. Blue: Hoechst 33342 staining.