



[Go to Product page](#)

Datasheet for ABIN2854612
anti-PLA2G3 antibody

1 Image

Overview

Quantity:	100 µL
Target:	PLA2G3
Reactivity:	Human
Host:	Rabbit
Clonality:	Polyclonal
Conjugate:	This PLA2G3 antibody is un-conjugated
Application:	Western Blotting (WB)

Product Details

Immunogen:	Recombinant protein encompassing a sequence within the center region of human PLA2G3. The exact sequence is proprietary.
Isotype:	IgG
Cross-Reactivity:	Human
Characteristics:	Rabbit polyclonal antibody to PLA2G3 (phospholipase A2, group III) PLA2G3 antibody [C1C3]
Purification:	Purified by antigen-affinity chromatography.

Target Details

Target:	PLA2G3
Alternative Name:	phospholipase A2 group III (PLA2G3 Products)

Target Details

Background: PLA2G3 belongs to the family of secreted phospholipase A2 (sPLA2, EC 3.1.1.4) proteins. These Ca(2+)-dependent lipolytic enzymes have a conserved Ca(2+)-binding loop and a his-asp dyad in the catalytic site (Murakami et al., 2003 [PubMed 12522102]).[supplied by OMIM]

Cellular Localization: Secreted , Cell membrane

Molecular Weight: 57 kDa

Gene ID: 50487

UniProt: [Q9NZ20](#)

Application Details

Application Notes: WB: 1:500-1:3000. Optimal dilutions/concentrations should be determined by the researcher. Not tested in other applications.

Comment: Positive Control: Molt-4

Restrictions: For Research Use only

Handling

Format: Liquid

Concentration: 1 mg/mL

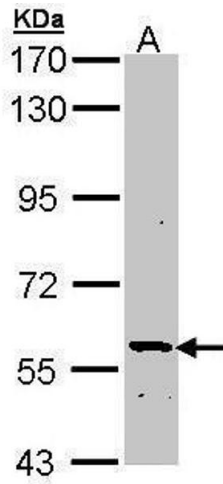
Buffer: 0.1M Tris-Glycine (pH 7), 10 % Glycerol, 0.01 % Thimerosal

Preservative: Thimerosal (Merthiolate)

Precaution of Use: This product contains Thimerosal (Merthiolate): a POISONOUS AND HAZARDOUS SUBSTANCE which should be handled by trained staff only.

Storage: 4 °C,-20 °C

Storage Comment: Store as concentrated solution. Centrifuge briefly prior to opening vial. For short-term storage (1-2 weeks), store at 4°C. For long-term storage, aliquot and store at -20°C or below. Avoid multiple freeze-thaw cycles.



Western Blotting

Image 1. WB Image Sample (30 ug of whole cell lysate) A:
Molt-4 , 7.5% SDS PAGE antibody diluted at 1:1000