

Datasheet for ABIN2854614
anti-PFKM antibody (N-Term)[Go to Product page](#)

2 Images

Overview

Quantity:	100 µL
Target:	PFKM
Binding Specificity:	N-Term
Reactivity:	Human
Host:	Rabbit
Clonality:	Polyclonal
Conjugate:	This PFKM antibody is un-conjugated
Application:	Western Blotting (WB)

Product Details

Immunogen:	Recombinant protein encompassing a sequence within the N-terminus region of human Fructose 6 Phosphate Kinase. The exact sequence is proprietary.
Isotype:	IgG
Cross-Reactivity:	Human, Mouse, Rat
Characteristics:	Rabbit Polyclonal antibody to PFK (muscle) (phosphofructokinase, muscle) PFK (muscle) antibody [N1N2-2], N-term
Purification:	Purified by antigen-affinity chromatography.
Grade:	KO Validated

Target Details

Target:	PFKM
Alternative Name:	phosphofructokinase, muscle (PFKM Products)
Background:	<p>The PFKM gene encodes the muscle isoform of phosphofructokinase (PFK) (ATP:D-fructose-6-phosphate-1-phosphotransferase, EC 2.7.1.11). PFK catalyzes the irreversible conversion of fructose-6-phosphate to fructose-1,6-bisphosphate and is a key regulatory enzyme in glycolysis. Mammalian PFK is a tetramer made up of various combinations of 3 subunits: muscle (PFKM), liver (PFKL, MIM 171860), and platelet (PFKP, MIM 171840), the genes for which are located on chromosomes 12q13, 21q22, and 10p, respectively. The composition of the tetramers differs according to the tissue type. Muscle and liver PFK are a homotetramers of 4M and 4L subunits, respectively. Erythrocytes contain both L and M subunits, which randomly tetramerize to form M4, L4, and M3L, M2L2, and ML3 hybrid forms of the holoenzyme (Vora et al., 1980 [PubMed 6444721], Raben and Sherman, 1995 [PubMed 7550225]).[supplied by OMIM]</p>
Molecular Weight:	85 kDa
Gene ID:	5213
UniProt:	P08237
Pathways:	Positive Regulation of Peptide Hormone Secretion , Negative Regulation of Hormone Secretion , Carbohydrate Homeostasis , Warburg Effect

Application Details

Application Notes:	WB: 1:500-1:3000. Optimal dilutions/concentrations should be determined by the researcher. Not tested in other applications.
Comment:	Positive Control: mouse brain , rat brain , HeLa Validation: KO/KD
Restrictions:	For Research Use only

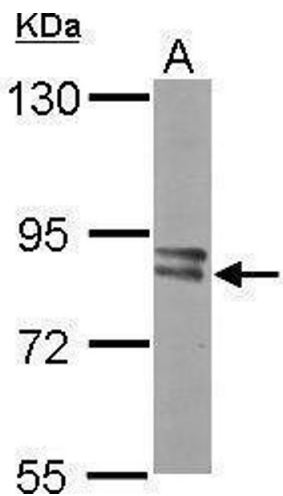
Handling

Format:	Liquid
Concentration:	0.52 mg/mL
Buffer:	1XPBS (pH 7), 20 % Glycerol, 0.025 % ProClin 300
Preservative:	ProClin

Handling

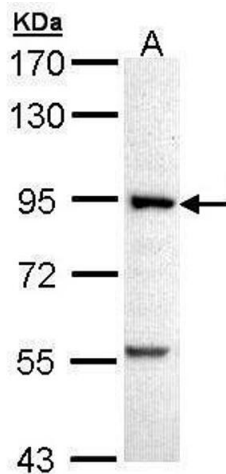
Precaution of Use:	This product contains ProClin: a POISONOUS AND HAZARDOUS SUBSTANCE which should be handled by trained staff only.
Storage:	4 °C,-20 °C
Storage Comment:	Store as concentrated solution. Centrifuge briefly prior to opening vial. For short-term storage (1-2 weeks), store at 4°C. For long-term storage, aliquot and store at -20°C or below. Avoid multiple freeze-thaw cycles.

Images



Western Blotting

Image 1. WB Image Sample (50 ug of whole cell lysate) A: Mouse brain 7.5% SDS PAGE antibody diluted at 1:2000



Western Blotting

Image 2. WB Image Sample (30 ug of whole cell lysate) A: A431 , 7.5% SDS PAGE antibody diluted at 1:5000