



[Go to Product page](#)

Datasheet for ABIN2854617
anti-ELP3/KAT9 antibody (Center)

2 Images

Overview

Quantity:	100 µL
Target:	ELP3/KAT9 (ELP3)
Binding Specificity:	Center
Reactivity:	Human
Host:	Rabbit
Clonality:	Polyclonal
Conjugate:	This ELP3/KAT9 antibody is un-conjugated
Application:	Western Blotting (WB), Immunofluorescence (IF), Immunocytochemistry (ICC)

Product Details

Immunogen:	Recombinant protein encompassing a sequence within the center region of human ELP3.
Characteristics:	Rabbit polyclonal antibody to ELP3 (elongation protein 3 homolog (S. cerevisiae)) ELP3 antibody [N3C3]
Purification:	Purified by antigen-affinity chromatography.

Target Details

Target:	ELP3/KAT9 (ELP3)
Alternative Name:	ELP3 (ELP3 Products)
Gene ID:	55140

Application Details

Application Notes: WB: 1:500-1:3000, ICC/IF: 1:100-1:1000.
Not yet tested in other applications.
Optimal working dilutions should be determined experimentally by the end user.

Restrictions: For Research Use only

Handling

Format: Liquid

Concentration: 1 mg/mL

Buffer: 0.1M Tris, 0.1M Glycine, 10 % Glycerol (pH 7).
0.01 % Thimerosal was added as a preservative.

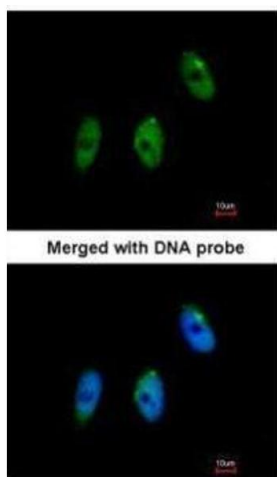
Preservative: Thimerosal (Merthiolate)

Precaution of Use: This product contains Thimerosal (Merthiolate): a POISONOUS AND HAZARDOUS SUBSTANCE which should be handled by trained staff only.

Storage: -20 °C

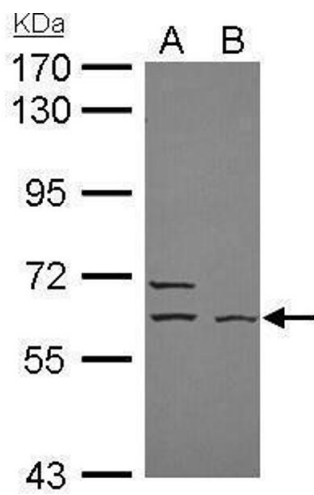
Storage Comment: Keep as concentrated solution. Aliquot and store at -20°C or below.
Avoid multiple freeze-thaw cycles.

Images



Immunofluorescence

Image 1. ICC/IF Image Immunofluorescence analysis of paraformaldehyde-fixed HeLa, using ELP3, antibody at 1:100 dilution.



Western Blotting

Image 2. WB Image ELP3 antibody [N3C3] detects ELP3 protein by Western blot analysis. A. 30 µg NT2D1 whole cell lysate/extract B. 30 µg IMR32 whole cell lysate/extract 7.5 % SDS-PAGE ELP3 antibody [N3C3] , dilution: 1:2000