

Datasheet for ABIN2854622  
**anti-Keratin 31 antibody**



[Go to Product page](#)

1 Image

## Overview

Quantity:	100 µL
Target:	Keratin 31 (KRT31)
Reactivity:	Human
Host:	Rabbit
Clonality:	Polyclonal
Conjugate:	This Keratin 31 antibody is un-conjugated
Application:	Western Blotting (WB)

## Product Details

Immunogen:	Recombinant protein encompassing a sequence within the center region of human Cytokeratin 31. The exact sequence is proprietary.
Isotype:	IgG
Cross-Reactivity:	Human
Characteristics:	Rabbit polyclonal antibody to keratin 31 (keratin 31) Cytokeratin 31 antibody [N1C1]
Purification:	Purified by antigen-affinity chromatography.

## Target Details

Target:	Keratin 31 (KRT31)
Alternative Name:	keratin 31 ( <a href="#">KRT31 Products</a> )

### Target Details

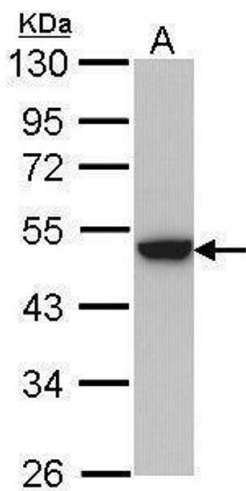
Molecular Weight:	47 kDa
Gene ID:	3881
UniProt:	<a href="#">Q15323</a>

### Application Details

Application Notes:	WB: 1:500-1:3000. Optimal dilutions/concentrations should be determined by the researcher. Not tested in other applications.
Comment:	Positive Control: HeLa
Restrictions:	For Research Use only

### Handling

Format:	Liquid
Concentration:	0.3 mg/mL
Buffer:	0.1M Tris-Glycine ( pH 7), 10 % Glycerol, 0.01 % Thimerosal
Preservative:	Thimerosal (Merthiolate)
Precaution of Use:	This product contains Thimerosal (Merthiolate): a POISONOUS AND HAZARDOUS SUBSTANCE which should be handled by trained staff only.
Storage:	4 °C,-20 °C
Storage Comment:	Store as concentrated solution. Centrifuge briefly prior to opening vial. For short-term storage (1-2 weeks), store at 4°C. For long-term storage, aliquot and store at -20°C or below. Avoid multiple freeze-thaw cycles.



Western Blotting

**Image 1.** WB Image Sample (30 ug of whole cell lysate) A:  
Hela 10% SDS PAGE antibody diluted at 1:1000