

Datasheet for ABIN2854624

**anti-IGSF3 antibody**[Go to Product page](#)**1** Image

## Overview

Quantity:	100 µL
Target:	IGSF3
Reactivity:	Human
Host:	Rabbit
Clonality:	Polyclonal
Conjugate:	This IGSF3 antibody is un-conjugated
Application:	Western Blotting (WB)

## Product Details

Immunogen:	Recombinant protein encompassing a sequence within the center region of human IGSF3. The exact sequence is proprietary.
Isotype:	IgG
Cross-Reactivity:	Human
Characteristics:	Rabbit polyclonal antibody to IGSF3 (immunoglobulin superfamily, member 3) IGSF3 antibody [N2N3]
Purification:	Purified by antigen-affinity chromatography.

## Target Details

Target:	IGSF3
Alternative Name:	immunoglobulin superfamily member 3 ( <a href="#">IGSF3 Products</a> )

## Target Details

Molecular Weight: 135 kDa

Gene ID: 3321

UniProt: [O75054](#)

## Application Details

Application Notes: WB: 1:500-1:3000. Optimal dilutions/concentrations should be determined by the researcher.  
Not tested in other applications.

Comment: Positive Control: H1299 , Raji

Restrictions: For Research Use only

## Handling

Format: Liquid

Concentration: 1 mg/mL

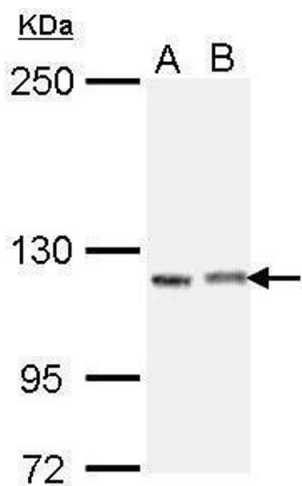
Buffer: 0.1M Tris-Glycine ( pH 7), 10 % Glycerol, 0.01 % Thimerosal

Preservative: Thimerosal (Merthiolate)

Precaution of Use: This product contains Thimerosal (Merthiolate): a POISONOUS AND HAZARDOUS SUBSTANCE which should be handled by trained staff only.

Storage: 4 °C,-20 °C

Storage Comment: Store as concentrated solution. Centrifuge briefly prior to opening vial. For short-term storage (1-2 weeks), store at 4°C. For long-term storage, aliquot and store at -20°C or below. Avoid multiple freeze-thaw cycles.



Western Blotting

**Image 1.** WB Image Sample (30 ug of whole cell lysate) A: H1299 B: Raji 5% SDS PAGE antibody diluted at 1:1000