

Datasheet for ABIN2854629
anti-Endothelin 3 antibody[Go to Product page](#)

1 Image

Overview

Quantity:	100 µL
Target:	Endothelin 3 (EDN3)
Reactivity:	Human
Host:	Rabbit
Clonality:	Polyclonal
Conjugate:	This Endothelin 3 antibody is un-conjugated
Application:	Western Blotting (WB)

Product Details

Immunogen:	Recombinant protein encompassing a sequence within the center region of human Endothelin 3. The exact sequence is proprietary.
Isotype:	IgG
Cross-Reactivity:	Human
Characteristics:	Rabbit polyclonal antibody to Endothelin 3 (endothelin 3) ET-3 antibody [N1C3]
Purification:	Purified by antigen-affinity chromatography.

Target Details

Target:	Endothelin 3 (EDN3)
Alternative Name:	endothelin 3 (EDN3 Products)

Target Details

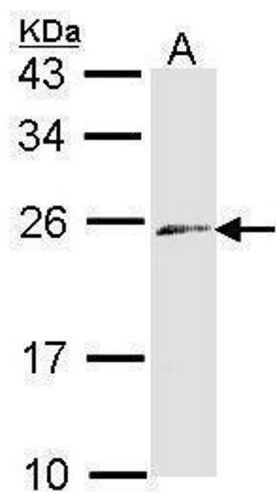
Molecular Weight:	25 kDa
Gene ID:	1908
UniProt:	P14138
Pathways:	Hormone Transport , Negative Regulation of Hormone Secretion , Regulation of Systemic Arterial Blood Pressure by Hormones

Application Details

Application Notes:	WB: 1:500-1:3000. Optimal dilutions/concentrations should be determined by the researcher. Not tested in other applications.
Comment:	Positive Control: Raji
Restrictions:	For Research Use only

Handling

Format:	Liquid
Concentration:	0.52 mg/mL
Buffer:	0.1M Tris-Glycine (pH 7), 20 % Glycerol, 0.01 % Thimerosal
Preservative:	Thimerosal (Merthiolate)
Precaution of Use:	This product contains Thimerosal (Merthiolate): a POISONOUS AND HAZARDOUS SUBSTANCE which should be handled by trained staff only.
Storage:	4 °C,-20 °C
Storage Comment:	Store as concentrated solution. Centrifuge briefly prior to opening vial. For short-term storage (1-2 weeks), store at 4°C. For long-term storage, aliquot and store at -20°C or below. Avoid multiple freeze-thaw cycles.



Western Blotting

Image 1. WB Image Sample (30 ug of whole cell lysate) A:
Raji 12% SDS PAGE antibody diluted at 1:1000