

Datasheet for ABIN2854630

anti-ACVR2A antibody[Go to Product page](#)**1** Image

Overview

Quantity:	100 µL
Target:	ACVR2A
Reactivity:	Human
Host:	Rabbit
Clonality:	Polyclonal
Conjugate:	This ACVR2A antibody is un-conjugated
Application:	Western Blotting (WB)

Product Details

Immunogen:	Recombinant protein encompassing a sequence within the center region of human Activin Receptor Type IIA. The exact sequence is proprietary.
Isotype:	IgG
Cross-Reactivity:	Human
Characteristics:	Rabbit Polyclonal antibody to Activin A Receptor type IIA (activin A receptor, type IIA) Activin A Receptor type IIA antibody [C1C3]
Purification:	Purified by antigen-affinity chromatography.

Target Details

Target:	ACVR2A
Alternative Name:	activin A receptor type 2A (ACVR2A Products)

Target Details

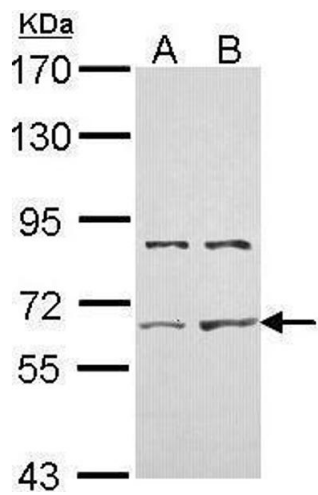
Molecular Weight:	58 kDa
Gene ID:	92
UniProt:	P27037

Application Details

Application Notes:	WB: 1:5000-1:20000. Optimal dilutions/concentrations should be determined by the researcher. Not tested in other applications.
Restrictions:	For Research Use only

Handling

Format:	Liquid
Concentration:	1 mg/mL
Buffer:	1XPBS pH 7, 20 % Glycerol, 0.025 % ProClin 300
Preservative:	ProClin
Precaution of Use:	This product contains ProClin: a POISONOUS AND HAZARDOUS SUBSTANCE which should be handled by trained staff only.
Storage:	4 °C, -20 °C
Storage Comment:	Store as concentrated solution. Centrifuge briefly prior to opening vial. For short-term storage (1-2 weeks), store at 4°C. For long-term storage, aliquot and store at -20°C or below. Avoid multiple freeze-thaw cycles.



Western Blotting

Image 1. WB Image Sample (30 ug of whole cell lysate) A: HeLa B: Hep G2 , 7.5% SDS PAGE antibody diluted at 1:10000