



[Go to Product page](#)

Datasheet for ABIN2854638
anti-POLR2H antibody (Center)

1 Image

Overview

Quantity:	100 µL
Target:	POLR2H
Binding Specificity:	Center
Reactivity:	Human
Host:	Rabbit
Clonality:	Polyclonal
Conjugate:	This POLR2H antibody is un-conjugated
Application:	Western Blotting (WB)

Product Details

Immunogen:	Recombinant protein encompassing a sequence within the center region of human RPB8.
Characteristics:	Rabbit polyclonal antibody to RPB8 (polymerase (RNA) II (DNA directed) polypeptide H) RPB8 antibody [N1C3]
Purification:	Purified by antigen-affinity chromatography.

Target Details

Target:	POLR2H
Alternative Name:	RPB8 (POLR2H Products)
Gene ID:	5437
Pathways:	Regulatory RNA Pathways

Application Details

Application Notes: WB: 1:500-1:3000.
Not yet tested in other applications.
Optimal working dilutions should be determined experimentally by the end user.

Restrictions: For Research Use only

Handling

Format: Liquid

Concentration: 0.48 mg/mL

Buffer: 0.1M Tris, 0.1M Glycine, 20 % Glycerol (pH 7).
0.01 % Thimerosal was added as a preservative.

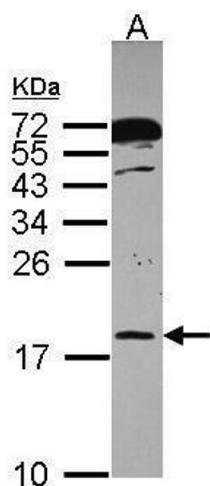
Preservative: Thimerosal (Merthiolate)

Precaution of Use: This product contains Thimerosal (Merthiolate): a POISONOUS AND HAZARDOUS SUBSTANCE which should be handled by trained staff only.

Storage: -20 °C

Storage Comment: Keep as concentrated solution. Aliquot and store at -20°C or below.
Avoid multiple freeze-thaw cycles.

Validation report #104334 for Multiplex Immunohistochemistry (mIHC)



Western Blotting

Image 1. WB Image Sample (30 ug of whole cell lysate) A:
A431, 12% SDS PAGE antibody diluted at 1:1000