



[Go to Product page](#)

Datasheet for ABIN2854640

anti-GPR4 antibody (Internal Region)

1 Image

Overview

Quantity:	100 µL
Target:	GPR4
Binding Specificity:	Internal Region
Reactivity:	Human
Host:	Rabbit
Clonality:	Polyclonal
Conjugate:	This GPR4 antibody is un-conjugated
Application:	Western Blotting (WB)

Product Details

Immunogen:	Carrier-protein conjugated synthetic peptide encompassing a sequence within the center region of human GPR4.
Characteristics:	Rabbit polyclonal antibody to GPR4 (G protein-coupled receptor 4) GPR4 antibody [N3C2], Internal
Purification:	Purified by antigen-affinity chromatography.

Target Details

Target:	GPR4
Alternative Name:	GPR4 (GPR4 Products)
Gene ID:	2828

Application Details

Application Notes: WB: 1:500-1:3000.
Not yet tested in other applications.
Optimal working dilutions should be determined experimentally by the end user.

Restrictions: For Research Use only

Handling

Format: Liquid

Concentration: 0.56 mg/mL

Buffer: 0.1M Tris, 0.1M Glycine, 20 % Glycerol (pH 7).
0.01 % Thimerosal was added as a preservative.

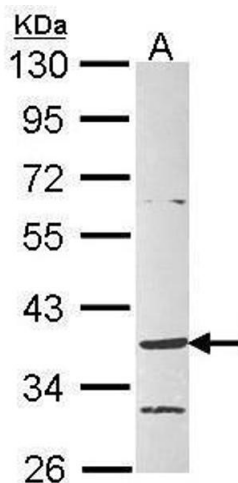
Preservative: Thimerosal (Merthiolate)

Precaution of Use: This product contains Thimerosal (Merthiolate): a POISONOUS AND HAZARDOUS SUBSTANCE which should be handled by trained staff only.

Storage: -20 °C

Storage Comment: Keep as concentrated solution. Aliquot and store at -20°C or below.
Avoid multiple freeze-thaw cycles.

Images



Western Blotting

Image 1. WB Image Sample (30 ug of whole cell lysate) A:
Raji 10% SDS PAGE antibody diluted at 1:1000