

Datasheet for ABIN2854646

anti-alpha 1 Adrenergic Receptor antibody

6 Images

[Go to Product page](#)

Overview

Quantity:	100 µL
Target:	alpha 1 Adrenergic Receptor (ADRA1A)
Reactivity:	Human
Host:	Rabbit
Clonality:	Polyclonal
Conjugate:	This alpha 1 Adrenergic Receptor antibody is un-conjugated
Application:	Western Blotting (WB), Immunofluorescence (IF), Immunohistochemistry (Paraffin-embedded Sections) (IHC (p)), Immunocytochemistry (ICC)

Product Details

Immunogen:	Carrier-protein conjugated synthetic peptide encompassing a sequence within the center region of human alpha 1a Adrenergic Receptor. The exact sequence is proprietary.
Isotype:	IgG
Cross-Reactivity:	Cat, Human, Mouse, Rat
Characteristics:	Rabbit Polyclonal antibody to alpha 1a Adrenergic Receptor (adrenergic, alpha-1A-, receptor) alpha 1a Adrenergic Receptor antibody
Purification:	Purified by antigen-affinity chromatography.

Target Details

Target:	alpha 1 Adrenergic Receptor (ADRA1A)
Alternative Name:	adrenoceptor alpha 1A (ADRA1A Products)

Target Details

Background: Alpha-1-adrenergic receptors (alpha-1-ARs) are members of the G protein-coupled receptor superfamily. They activate mitogenic responses and regulate growth and proliferation of many cells. There are 3 alpha-1-AR subtypes: alpha-1A, -1B and -1D, all of which signal through the Gq/11 family of G-proteins and different subtypes show different patterns of activation. This gene encodes alpha-1A-adrenergic receptor. Alternative splicing of this gene generates four transcript variants, which encode four different isoforms with distinct C-termini but having similar ligand binding properties.

Cellular Localization: Cell membrane

Molecular Weight: 51 kDa

Gene ID: 148

UniProt: [P35348](#)

Pathways: [AMPK Signaling](#)

Application Details

Application Notes: WB: 1:500-1:3000. ICC/IF: 1:100-1:1000. IHC-P: 1:100-1:1000. Optimal dilutions/concentrations should be determined by the researcher. Not tested in other applications.

Comment: Positive Control: Raji , Jurkat , Raji , NCI-H929

Restrictions: For Research Use only

Handling

Format: Liquid

Concentration: 1 mg/mL

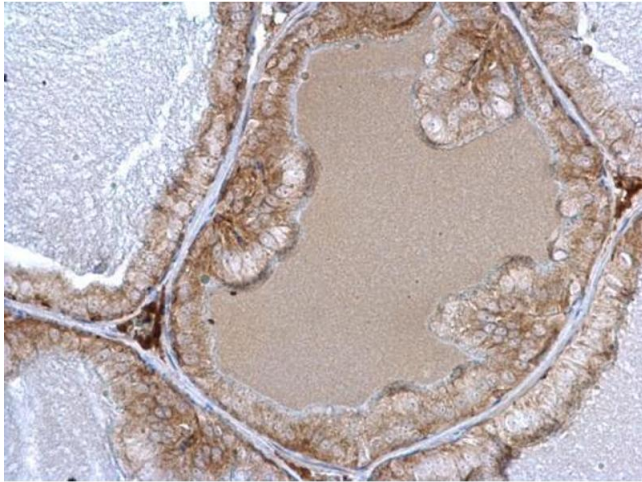
Buffer: 1XPBS (pH 7), 20 % Glycerol, 0.01 % Thimerosal

Preservative: Thimerosal (Merthiolate)

Precaution of Use: This product contains Thimerosal (Merthiolate): a POISONOUS AND HAZARDOUS SUBSTANCE which should be handled by trained staff only.

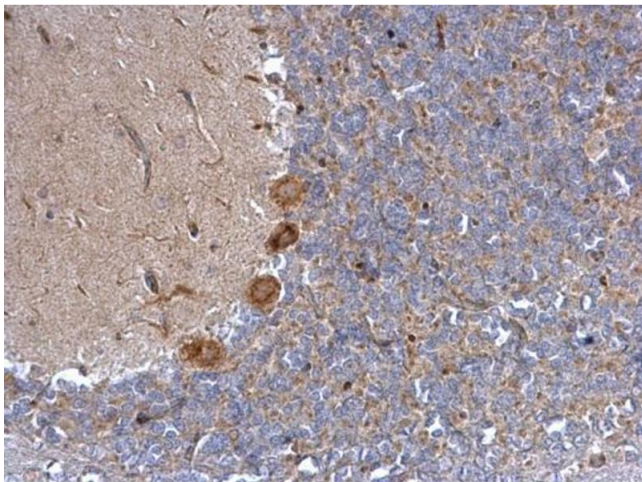
Storage: 4 °C, -20 °C

Storage Comment: Store as concentrated solution. Centrifuge briefly prior to opening vial. For short-term storage (1-2 weeks), store at 4°C. For long-term storage, aliquot and store at -20°C or below. Avoid multiple freeze-thaw cycles.



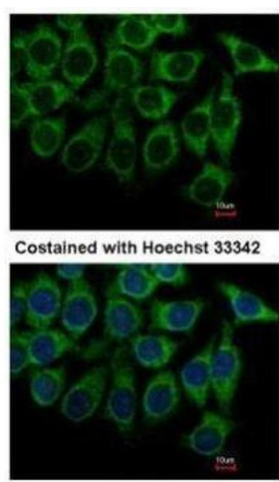
Immunohistochemistry

Image 1. IHC-P Image alpha 1a Adrenergic Receptor antibody detects alpha 1a Adrenergic Receptor protein at cytosol on mouse prostate by immunohistochemical analysis. Sample: Paraffin-embedded mouse prostate. alpha 1a Adrenergic Receptor antibody , dilution: 1:500.



Immunohistochemistry

Image 2. IHC-P Image alpha 1a Adrenergic Receptor antibody detects alpha 1a Adrenergic Receptor protein at cytosol on rat hind brain by immunohistochemical analysis. Sample: Paraffin-embedded rat hind brain. alpha 1a Adrenergic Receptor antibody , dilution: 1:500.



Immunofluorescence

Image 3. ICC/IF Image Immunofluorescence analysis of methanol-fixed Hep3B, using alpha 1a Adrenergic Receptor, antibody at 1:500 dilution.

Please check the [product details page](#) for more images. Overall 6 images are available for ABIN2854646.