

Datasheet for ABIN2854647

anti-GPR82 antibody**3** Images[Go to Product page](#)

Overview

Quantity:	100 µL
Target:	GPR82
Reactivity:	Human
Host:	Rabbit
Clonality:	Polyclonal
Conjugate:	This GPR82 antibody is un-conjugated
Application:	Western Blotting (WB), Immunohistochemistry (Paraffin-embedded Sections) (IHC (p)), Immunofluorescence (IF), Immunocytochemistry (ICC)

Product Details

Immunogen:	Carrier-protein conjugated synthetic peptide encompassing a sequence within the center region of human GPR82. The exact sequence is proprietary.
Isotype:	IgG
Cross-Reactivity:	Human
Characteristics:	Rabbit Polyclonal antibody to GPR82 (G protein-coupled receptor 82) GPR82 antibody [N2C1], Internal
Purification:	Purified by antigen-affinity chromatography.

Target Details

Target:	GPR82
Alternative Name:	G protein-coupled receptor 82 (GPR82 Products)

Target Details

Background: G protein-coupled receptors (GPCRs, or GPRs) contain 7 transmembrane domains and transduce extracellular signals through heterotrimeric G proteins.[supplied by OMIM]

Cellular Localization: Cell membrane, Multi-pass membrane protein

Molecular Weight: 38 kDa

Gene ID: 27197

UniProt: [Q96P67](#)

Application Details

Application Notes: WB: 1:500-1:3000. ICC/IF: 1:100-1:1000. IHC-P: 1:100-1:1000. Optimal dilutions/concentrations should be determined by the researcher. Not tested in other applications.

Comment: Positive Control: A549

Restrictions: For Research Use only

Handling

Format: Liquid

Concentration: 1 mg/mL

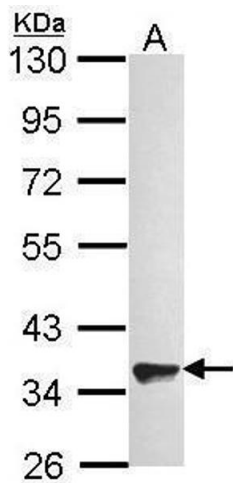
Buffer: 1XPBS (pH 7), 20 % Glycerol, 0.01 % Thimerosal

Preservative: Thimerosal (Merthiolate)

Precaution of Use: This product contains Thimerosal (Merthiolate): a POISONOUS AND HAZARDOUS SUBSTANCE which should be handled by trained staff only.

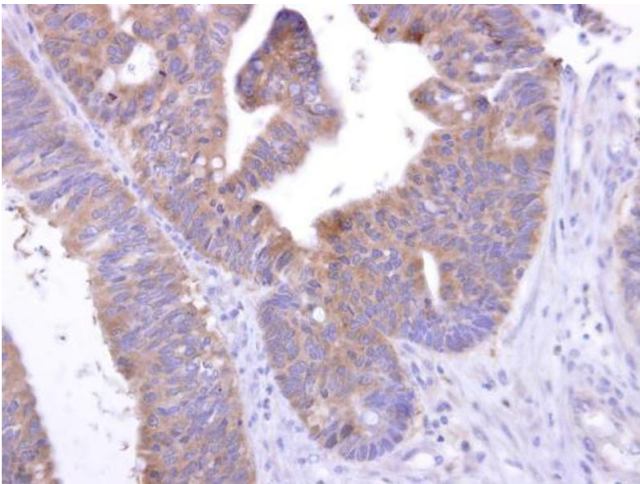
Storage: 4 °C, -20 °C

Storage Comment: Store as concentrated solution. Centrifuge briefly prior to opening vial. For short-term storage (1-2 weeks), store at 4°C. For long-term storage, aliquot and store at -20°C or below. Avoid multiple freeze-thaw cycles.



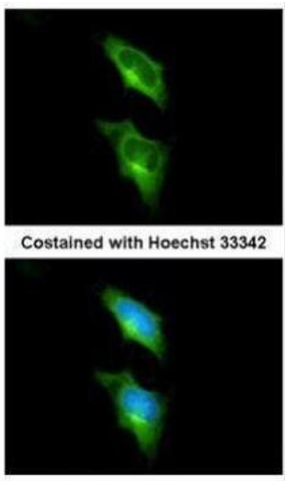
Western Blotting

Image 1. WB Image Sample (30 ug of whole cell lysate) A: A549 10% SDS PAGE antibody diluted at 1:1000



Immunohistochemistry

Image 2. IHC-P Image GPR82 antibody [N2C1], Internal detects GPR82 protein at cytosol on human colon carcinoma by immunohistochemical analysis. Sample: GPR82 antibody [N2C1], Internal , dilution: 1:250.



Immunofluorescence

Image 3. ICC/IF Image Immunofluorescence analysis of methanol-fixed HeLa, using GPR82, antibody at 1:200 dilution.