

Datasheet for ABIN2854648
anti-BCL7A antibody (C-Term)[Go to Product page](#)

7 Images

Overview

Quantity:	100 µL
Target:	BCL7A
Binding Specificity:	C-Term
Reactivity:	Human, Mouse, Rat
Host:	Rabbit
Clonality:	Polyclonal
Conjugate:	This BCL7A antibody is un-conjugated
Application:	Western Blotting (WB), Immunocytochemistry (ICC), Immunofluorescence (IF), Immunohistochemistry (Paraffin-embedded Sections) (IHC (p))

Product Details

Immunogen:	Carrier-protein conjugated synthetic peptide encompassing a sequence within the C-terminus region of human BCL7A. The exact sequence is proprietary.
Isotype:	IgG
Characteristics:	Rabbit Polyclonal antibody to BCL7A (B-cell CLL/lymphoma 7A) BCL7A antibody [C2C3], C-term
Purification:	Purified by antigen-affinity chromatography.

Target Details

Target:	BCL7A
Alternative Name:	BCL7A (BCL7A Products)

Target Details

Background: This gene is directly involved, with Myc and IgH, in a three-way gene translocation in a Burkitt lymphoma cell line. As a result of the gene translocation, the N-terminal region of the gene product is disrupted, which is thought to be related to the pathogenesis of a subset of high-grade B cell non-Hodgkin lymphoma. The N-terminal segment involved in the translocation includes the region that shares a strong sequence similarity with those of BCL7B and BCL7C. Two transcript variants encoding different isoforms have been found for this gene.

Molecular Weight: 23 kDa

Gene ID: 605

Application Details

Application Notes: Suggested dilution Reference ICC/IF 1:100-1:1000* IHC (Formalin-fixed paraffin-embedded sections) 1:100-1:1000* Western blot 1:500-1:3000* Not tested in other applications. *Optimal dilutions/concentrations should be determined by the researcher. Suggested dilution Reference ICC/IF 1:100-1:1000* IHC (Formalin-fixed paraffin-embedded sections) 1:100-1:1000* Western blot 1:500-1:3000*

Comment: Positive Control: HeLaS3 , Neuro2A , GL261

Restrictions: For Research Use only

Handling

Format: Liquid

Concentration: 1 mg/mL

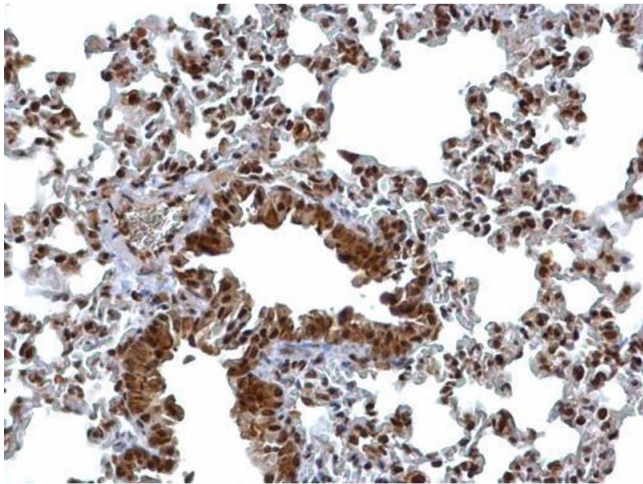
Buffer: 1XPBS, 20 % Glycerol (pH 7). 0.01 % Thimerosal was added as a preservative.

Preservative: Thimerosal (Merthiolate)

Precaution of Use: This product contains Thimerosal (Merthiolate): a POISONOUS AND HAZARDOUS SUBSTANCE which should be handled by trained staff only.

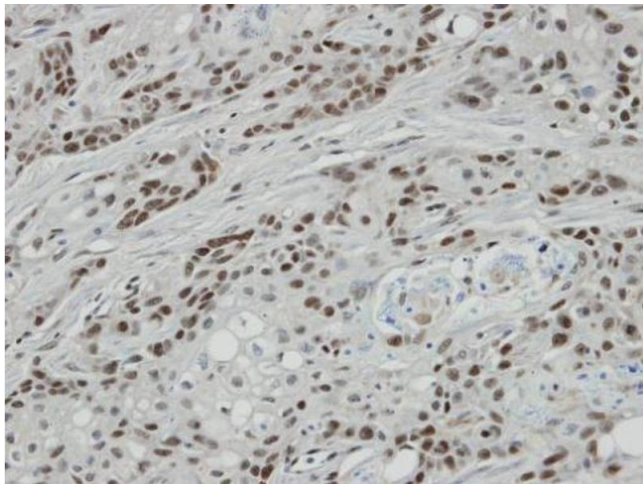
Storage: -20 °C

Storage Comment: Keep as concentrated solution. Aliquot and store at -20°C or below. Avoid multiple freeze-thaw cycles.



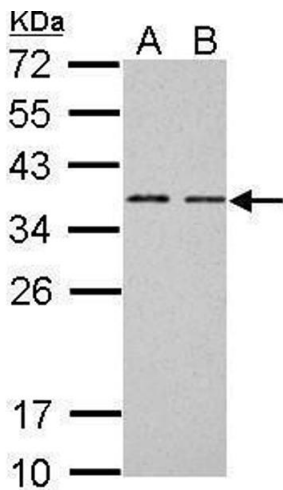
Immunohistochemistry

Image 1. IHC-P Image BCL7A antibody [C2C3], C-term detects BCL7A protein at nucleus on mouse lung by immunohistochemical analysis. Sample: Paraffin-embedded mouse lung. BCL7A antibody [C2C3], C-term , dilution: 1:500.



Immunohistochemistry

Image 2. IHC-P Image Immunohistochemical analysis of paraffin-embedded oral CA cell lines Ca922 xenograft, using BCL7A, antibody at 1:100 dilution.



Western Blotting

Image 3. WB Image BCL7A antibody [C2C3], C-term detects BCL7A protein by Western blot analysis. A. 30 µg Neuro2A whole cell lysate/extract B. 30 µg GL261 whole cell lysate/extract 12 % SDS-PAGE BCL7A antibody [C2C3], C-term , dilution: 1:1000

Please check the [product details page](#) for more images. Overall 7 images are available for ABIN2854648.