

Datasheet for ABIN2854660  
**anti-CYLD antibody (C-Term)**

## 5 Images

[Go to Product page](#)

## Overview

Quantity:	100 µL
Target:	CYLD
Binding Specificity:	C-Term
Reactivity:	Human, Mouse
Host:	Rabbit
Clonality:	Polyclonal
Conjugate:	This CYLD antibody is un-conjugated
Application:	Western Blotting (WB), Immunocytochemistry (ICC), Immunofluorescence (IF), Immunohistochemistry (Paraffin-embedded Sections) (IHC (p))

## Product Details

Immunogen:	Carrier-protein conjugated synthetic peptide encompassing a sequence within the C-terminus region of human CYLD. The exact sequence is proprietary.
Isotype:	IgG
Cross-Reactivity:	Xenopus tropicalis, Cow (Bovine)
Cross-Reactivity (Details):	Xenopus Tropicalis (100 %), Bovine (100 %)
Characteristics:	Rabbit Polyclonal antibody to CYLD (cylindromatosis (turban tumor syndrome)) CYLD antibody
Purification:	Purified by antigen-affinity chromatography.

## Target Details

Target:	CYLD
Alternative Name:	CYLD ( <a href="#">CYLD Products</a> )
Background:	<p>This gene is encodes a cytoplasmic protein with three cytoskeletal-associated protein-glycine-conserved (CAP-GLY) domains that functions as a deubiquitinating enzyme. Mutations in this gene have been associated with cylindromatosis, multiple familial trichoepithelioma, and Brooke-Spiegler syndrome. Alternate transcriptional splice variants, encoding different isoforms, have been characterized.</p> <p>Cellular Localization: Cytoplasm , perinuclear region</p>
Molecular Weight:	107 kDa
Gene ID:	1540
Pathways:	<a href="#">Apoptosis</a> , <a href="#">Activation of Innate immune Response</a>

## Application Details

Application Notes:	<p>Suggested dilution Reference ICC/IF 1:100-1:1000* IHC (Formalin-fixed paraffin-embedded sections) 1:100-1:1000* Western blot 1:500-1:3000* Not tested in other applications. *Optimal dilutions/concentrations should be determined by the researcher.Suggested dilutionReferenceICC/IF1:100-1:1000* IHC (Formalin-fixed paraffin-embedded sections)1:100-1:1000* Western blot1:500-1:3000*</p>
Comment:	Positive Control: HepG2 , C8D30 , NIH-3T3 , BCL-1 , Raw264.7 , C2C12
Restrictions:	For Research Use only

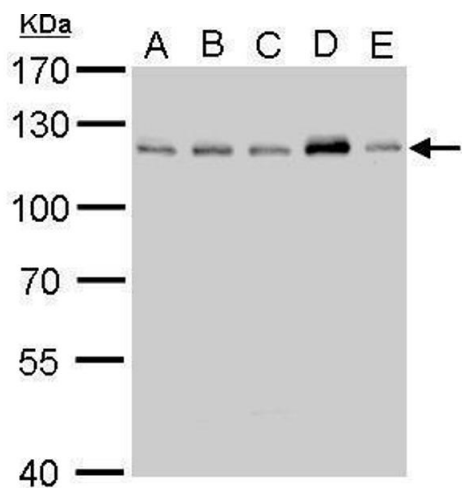
## Handling

Format:	Liquid
Concentration:	1 mg/mL
Buffer:	1XPBS, 20 % Glycerol ( pH 7). 0.01 % Thimerosal was added as a preservative.
Preservative:	Thimerosal (Merthiolate)
Precaution of Use:	This product contains Thimerosal (Merthiolate): a POISONOUS AND HAZARDOUS SUBSTANCE which should be handled by trained staff only.
Storage:	-20 °C

Handling

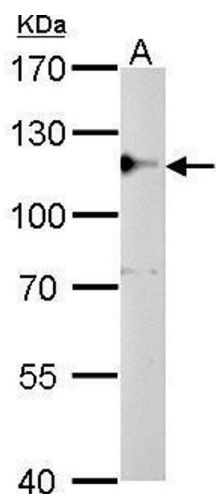
Storage Comment: Keep as concentrated solution. Aliquot and store at -20°C or below. Avoid multiple freeze-thaw cycles.

Images



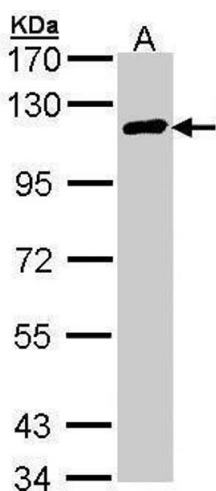
**Western Blotting**

**Image 1.** WB Image CYLD antibody detects CYLD protein by Western blot analysis. A. 30 µg C8D30 whole cell lysate/extract B. 30 µg NIH-3T3 whole cell lysate/extract C. 30 µg BCL-1 whole cell lysate/extract D. 30 µg Raw264.7 whole cell lysate/extract E. 30 µg C2C12 whole cell lysate/extract 7.5 % SDS-PAGE CYLD antibody , dilution: 1:1000



**Western Blotting**

**Image 2.** WB Image CYLD antibody detects CYLD protein by Western blot analysis. A. 50 µg rat brain lysate/extract 7.5 % SDS-PAGE CYLD antibody , dilution: 1:500



**Western Blotting**

**Image 3.** WB Image Sample (30 ug of whole cell lysate) A: Hep G2 , 7.5% SDS PAGE antibody diluted at 1:1000

Please check the [product details page](#) for more images. Overall 5 images are available for ABIN2854660.