



Datasheet for ABIN2854668
anti-DOCK1 antibody (C-Term)



[Go to Product page](#)

3 Images

Overview

Quantity:	100 µL
Target:	DOCK1
Binding Specificity:	C-Term
Reactivity:	Human
Host:	Rabbit
Clonality:	Polyclonal
Conjugate:	This DOCK1 antibody is un-conjugated
Application:	Western Blotting (WB), Immunofluorescence (IF), Immunocytochemistry (ICC), Immunohistochemistry (Paraffin-embedded Sections) (IHC (p))

Product Details

Immunogen:	Carrier-protein conjugated synthetic peptide encompassing a sequence within the C-terminus region of human DOCK1. The exact sequence is proprietary.
Isotype:	IgG
Cross-Reactivity:	Human, Mouse, Rat
Characteristics:	Rabbit Polyclonal antibody to DOCK1 (dedicator of cytokinesis 1) DOCK1 antibody
Purification:	Purified by antigen-affinity chromatography.

Target Details

Target:	DOCK1
---------	-------

Target Details

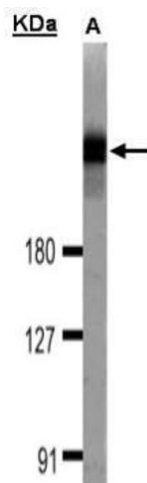
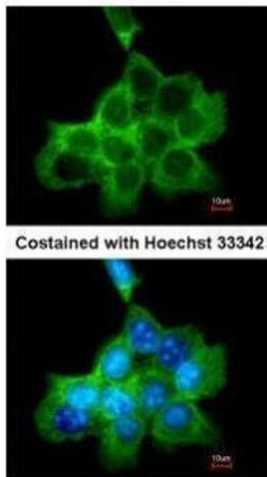
Alternative Name:	dedicator of cytokinesis 1 (DOCK1 Products)
Background:	This gene product binds to the SH3 domain of CRK protein. It may regulate cell surface extension and may have a role in the cell surface extension of an engulfing cell around a dying cell during apoptosis.
Molecular Weight:	215 kDa
Gene ID:	1793
UniProt:	Q14185
Pathways:	Signaling of Hepatocyte Growth Factor Receptor

Application Details

Application Notes:	WB: 1:500-1:3000. ICC/IF: 1:100-1:1000. IHC-P: 1:100-1:1000. Optimal dilutions/concentrations should be determined by the researcher. Not tested in other applications.
Comment:	Positive Control: 293T , HeLaS3 , C8D30 , NIH-3T3 , Raw264.7 , C2C12
Restrictions:	For Research Use only

Handling

Format:	Liquid
Concentration:	0.99 mg/mL
Buffer:	0.1M Tris, 0.1M Glycine (pH 7) , 20 % Glycerol, 0.01 % Thimerosal
Preservative:	Thimerosal (Merthiolate)
Precaution of Use:	This product contains Thimerosal (Merthiolate): a POISONOUS AND HAZARDOUS SUBSTANCE which should be handled by trained staff only.
Storage:	4 °C,-20 °C
Storage Comment:	Store as concentrated solution. Centrifuge briefly prior to opening vial. For short-term storage (1-2 weeks), store at 4°C. For long-term storage, aliquot and store at -20°C or below. Avoid multiple freeze-thaw cycles.

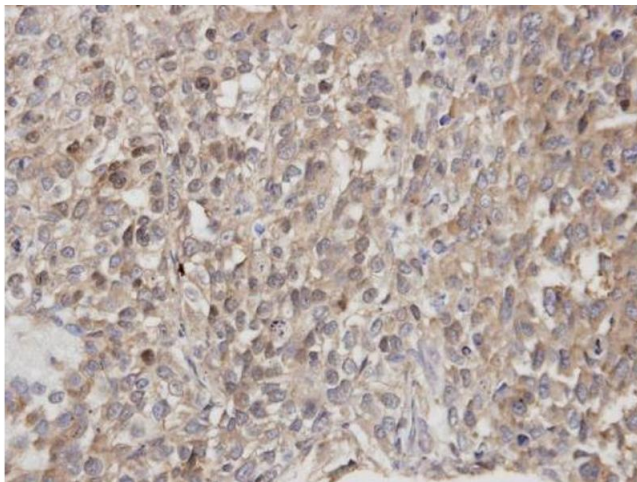


Immunofluorescence

Image 1. ICC/IF Image Immunofluorescence analysis of methanol-fixed A431, using DOCK1/180, antibody at 1:200 dilution.

Western Blotting

Image 2. WB Image Sample(30 µg of whole cell lysate) A:293T 7.5% SDS PAGE antibody diluted at 1:1000



Immunohistochemistry

Image 3. IHC-P Image Immunohistochemical analysis of paraffin-embedded human lung cancer, using DOCK 180 , antibody at 1:100 dilution.